

# California State Park Partners



January 2007

**Cover photographs, clockwise from top left:**

- California Shock/Trauma Air Rescue helicopter. Photo: CALSTAR
- San Diego County Coastal Cleanup Day. Photo: CA Coastal Commission
- Specialty Vehicle Institute of America Training Session. Photo: ATV Safety Institute
- Period Dancing at the Custom House, Monterey State Historic Park. Photo: California State Parks
- State Park and Recreation Commission field trip, Los Angeles State Historic Park site. Photo: California State Parks

# California State Park Partners



**January 2007**





The generosity of California State Park Partners is astonishing! State Parks is fortunate to have so many public, private and non-profit organizations ready and willing to help us fulfill our mission to provide for the health, inspiration and education of the people of California. Our partners work to preserve the state's extraordinary biological diversity, protect its most valued natural and cultural resources and create opportunities for high-quality outdoor recreation. Partners raise funds to

acquire valuable property, keep facilities clean, present valuable interpretation of our natural and cultural resources, and offer a welcoming presence in our parks.

The community service benefits State Parks Partners provide are far reaching. Not only do partnerships benefit individual park units, but they also raise the awareness of the wide variety of resources and opportunities California's State Parks offer to visitors. In these symbiotic relationships, both the partners and the parks gain from the association. Partners increase the value of California's State Parks with every hour they donate and every dollar they raise.

Opportunities for new partners abound! Join us and discover the many states of California!

A handwritten signature in black ink that reads "Ruth Coleman". The signature is fluid and cursive, with the first name "Ruth" and last name "Coleman" clearly distinguishable.

Ruth Coleman  
Director, California State Parks

The following publication is a synopsis of the many partners with which California State Parks works. It is not intended to be an exhaustive list, and is subject to periodic updates and revisions that reflect changes and additions to the contacts and organizations. Furthermore, the list is not intended to be an endorsement of any of the organizations.

All photos are credited to California State Parks, unless otherwise noted.

Compiled and prepared by:

California State Parks  
Planning Division  
PO Box 942896, Sacramento CA 94296-0001  
(916) 653-9901  
[planning@parks.ca.gov](mailto:planning@parks.ca.gov)  
[www.parks.ca.gov](http://www.parks.ca.gov)

© California State Parks, 2006

# Table of Contents

<b>Federal and State Government Partners</b>	<b>9</b>
<b>California State Parks Foundation</b>	<b>11</b>
<b>Commissions, Committees and Councils</b>	
<b>California State Parks Commissions and Committees</b>	<b>15</b>
California Park and Recreation Commission	
California Recreational Trails Committee	
Off-Highway Motor Vehicle Recreation Commission	
State Historical Resources Commission	
<b>Related Commissions and Councils</b>	<b>21</b>
Bay Area Open Space Council	
California Advisory Committee on Geographic Names	
California Arts Council	
California Biodiversity Council	
California Coastal Commission	
California Energy Commission	
California Film Commission	
California Mapping Coordinating Committee	
California State Lands Commission	
California Travel and Tourism Commission	
Central Valley Joint Venture	
Colorado River Board of California	
Delta Protection Commission	
Native American Heritage Commission	
San Francisco Bay Conservation and Development Commission	
Wildlife Conservation Board	
<b>Interpretation and Education Partners</b>	<b>35</b>
ATV Safety Institute	
California Environmental Education Interagency Network	
California Exhibit Resources Alliance	
California Institute for Biodiversity	
California League of Park Associations	
California Museum for History, Women and the Arts	

Cooperating Associations  
Examples of Cooperating Associations:  
California State Railroad Museum Foundation  
Doheny State Beach Interpretive Association  
Friends of San Diego Wildlife Refuges, Inc.  
Waddell Creek Association  
Interpretive Concession Contracts  
Motorcycle Safety Foundation  
Parks Online Resources for Teachers and Students

## Cultural Heritage Partners

53

California Council for the Promotion of History  
California Historical Society  
California Main Street Alliance  
California Preservation Foundation  
Certified Local Government Program  
National Trust for Historic Preservation  
Native American Land Conservancy  
PAST Foundation  
Santa Barbara Trust for Historic Preservation  
Society for California Archaeology  
Torres-Martinez Indian Tribe and Reservation

## Natural Resource Partners

65

California Invasive Plant Council  
California Native Plant Society  
Desert Protective Council  
InterTribal Sinkyone Wilderness Council  
Mill Creek Advisory Committee  
Partners in Flight  
Partners of the Monterey Bay National Marine Sanctuary  
Partners of the Tijuana River National Estuarine Research Reserve  
Santa Lucia Conservancy  
Southern California Wetlands Recovery Project  
The Dunes Collaborative  
Universities of California and California State Universities

## Parkland Acquisition Partners

79

American Land Conservancy  
American River Conservancy  
Anza-Borrego Foundation  
Big Sur Land Trust  
Bolsa Chica Land Trust



California Rangeland Trust  
Cayucos Land Conservancy  
Elkhorn Slough Foundation  
Foundation for Small Wilderness Area Preservation  
Hills for Everyone  
Lake County Land Trust  
Land Conservancy of San Luis Obispo County  
LandPaths  
Land Trust for Santa Barbara County  
Land Trust of Napa County  
Mendocino Land Trust  
Middle Mountain Foundation  
Northcoast Regional Land Trust  
Packard Foundation  
Peninsula Open Space Trust  
Riverside Land Conservancy  
Sacramento Valley Conservancy  
Sanctuary Forest, Inc.  
Santa Monica Mountains Trails Council  
Save Mount Diablo  
Save the Redwoods League  
Sempervirens Fund  
Sequoia Challenge  
Sonoma County Agricultural Preservation and Open Space District  
Sonoma Land Trust  
The Archaeological Conservancy  
The Nature Conservancy  
The Trust for Public Land  
Truckee Donner Land Trust  
Wildlands Conservancy  
Yucaipa Valley Conservancy

## Service Partners

117

California Parks Hospitality Association  
California Service Corps  
California Shock/Trauma Air Rescue  
Off-Highway Motor Vehicle Service Partners  
Specialized Park Operating Agreements  
Tierra Del Sol Four Wheel Drive Club of San Diego  
Ventura Search and Rescue  
Volunteers in Parks Program

## Outdoor Recreation Partners

127

American Motorcyclist Association  
American San Association

Badlands Off-Road Adventures  
Blue Ribbon Coalition  
California Association of 4 Wheel Drive Clubs Inc.  
California Nevada Snowmobile Association  
California Off-Road Vehicle Association  
California Police Activities League/State Park Police Activities League/Off-Road  
Police Activities League  
California Trail Users Coalition/Grapevine Adventure Association  
Health & Wellness Program  
National Off-Highway Vehicle Conservation Council  
Off-Road Business Association  
Pacific Leadership Institute  
San Diego Off-Road Coalition

**Professional Organizations** **143**

California Association of Regional Park and Open Space Administrators  
California Park and Recreation Society  
California Roundtable on Recreation, Parks and Tourism  
California State Park Rangers Association

**Appendix: California State Parks Cooperating Associations** **149**

# Federal and State Government

California State Parks has a strong working relationship with many Federal and State government departments. The list below is a sampling of our federal and state government partners.

## Federal Government

Bureau of Land Management

Bureau of Reclamation

US Fish and Wildlife Service

National Park Service

Forest Service

## Website

[www.blm.gov](http://www.blm.gov)

[www.usbr.gov](http://www.usbr.gov)

[www.fws.gov](http://www.fws.gov)

[www.nps.gov](http://www.nps.gov)

[www.fs.fed.us](http://www.fs.fed.us)

## State Government - Departments

CALFED Bay-Delta Program

California Conservation Corps

Colorado River Board of California

Dept. of Boating and Waterways

Dept. of Conservation

Dept. of Fish and Game

Dept. of Food and Agriculture

Dept. of Forestry and Fire Protection

Dept. of Toxic Substance Control

Dept. of Water Resources

Integrated Waste Management Board

State Lands Commission

State Water Resources Control Board

Wildlife Conservation Board

## Website

[www.cawater.ca.gov](http://www.cawater.ca.gov)

[www.ccc.ca.gov](http://www.ccc.ca.gov)

[www.crb.ca.gov](http://www.crb.ca.gov)

[www.dbw.ca.gov](http://www.dbw.ca.gov)

[www.consrv.ca.gov](http://www.consrv.ca.gov)

[www.dfg.ca.gov](http://www.dfg.ca.gov)

[www.cdfa.ca.gov](http://www.cdfa.ca.gov)

[www.fire.ca.gov](http://www.fire.ca.gov)

[www.dtsc.ca.gov](http://www.dtsc.ca.gov)

[www.dwr.water.ca.gov](http://www.dwr.water.ca.gov)

[www.ciwmb.ca.gov](http://www.ciwmb.ca.gov)

[www.slc.ca.gov](http://www.slc.ca.gov)

[www.waterboards.ca.gov](http://www.waterboards.ca.gov)

[www.wcb.ca.gov](http://www.wcb.ca.gov)

## Resources Agency Conservancies

Baldwin Hills Conservancy

California Tahoe Conservancy

Coachella Valley Mountains Conservancy

San Diego River Conservancy

San Gabriel & Lower Los Angeles Rivers and Mountains Conservancy

## Website

[www.bhc.ca.gov](http://www.bhc.ca.gov)

[www.tahoicons.ca.gov](http://www.tahoicons.ca.gov)

[www.cvmc.ca.gov](http://www.cvmc.ca.gov)

[www.sdrc.ca.gov](http://www.sdrc.ca.gov)

[www.rmc.ca.gov](http://www.rmc.ca.gov)

San Joaquin River Conservancy  
Santa Monica Mountains Conservancy  
Sierra Nevada Conservancy  
State Coastal Conservancy

[www.sjrc.ca.gov](http://www.sjrc.ca.gov)  
[www.smmc.ca.gov](http://www.smmc.ca.gov)  
[www.sierranevada.ca.gov](http://www.sierranevada.ca.gov)  
[www.coastalconservancy.ca.gov](http://www.coastalconservancy.ca.gov)

# California State Parks Foundation

The California State Parks Foundation is the only statewide non-profit organization dedicated to protecting, enhancing and advocating for all of California's state parks. The Foundation's support base of over 75,000 members is dedicated to preserving, protecting and enhancing State Parks. The Foundation's work includes:

- Educational Programs
- Fundraising and Grant Making
- Advocacy
- Promoting California State Parks



**CALIFORNIA  
STATE PARKS  
FOUNDATION**

## Educational Programs

The California State Parks Foundation supports a wide range of state park programs. Such programs include:

- Education grants for FamCamp®, Jr. Rangers, Jr. Lifeguards - programs that introduce "non-traditional" users to our parks
- Coast Alive! - a Foundation sponsored statewide program to provide a multi-media marine education curriculum for 50,000 youngsters
- Bay Youth for the Environment - a Foundation sponsored after school work program for youth ages 16-20 designed to provide youth with environmental knowledge and employment experience while they work to restore local wetlands



FamCamp® Hikers

## California State Parks Foundation (continued)

### Fundraising and Grant Making

Since its inception the Foundation has provided \$120 million in cash, land and collections to California State Parks. Each year the Foundation provides millions of dollars for state park projects:

- Competitive grants to benefit our State Parks System
- Endowed Funds :
  - o Ranger Lane Volunteer Enhancement Fund
  - o Trione Trails Legacy Fund
  - o Park Education Legacy Fund
  - o Vikingsholm Restoration Fund
  - o Chino Hills Endowment
- Earth Day Restoration and Cleanup - an annual program of grants to parks for Earth Day projects. In 2006 over 4,500 volunteers planted 2,159 native trees and over 3,000 native plants; removed over 3,000 bags of trash and recyclables from parks, beaches and waterways; restored close to 15 miles of trails; and installed 84 new recycling bins.
- Restricted Grant Making for key programs such as capital and restoration projects, environmental education, FamCamp®, Jr. Rangers, Jr. Lifeguards, interpretive programs and events.
- Current major site specific fundraising projects that the Foundation has undertaken include:
  - o Restoration of Pigeon Point Lighthouse
  - o Restoration of the Dairy Complex at Año Nuevo State Reserve as the Marine Education Center, a visitor center and volunteer support facility



Yosemite Slough, Candlestick Point SRA. Photo: CSP Foundation

- o Restoration of 34 acres of wetlands at Candlestick Point State Recreation Area

## California State Parks Foundation (continued)

### Advocacy

- Educating elected officials and the general public on funding needs and sound park policy
- Hosting an annual Park Advocacy Day where park supporters volunteer time to visit with their legislators in Sacramento and encourage support for State Parks
- Legislative initiatives to ensure funding for maintenance and operations and capital improvements
- Increasing our base of state parks supporters
- Protecting our state parks from inappropriate use such as the proposed toll road through San Onofre State Beach; the casino at Humboldt Lagoons State Park, and the Sunrise Powerlink in Anza Borrego Desert State Park.



Park Advocacy Day. Photo: CSP Foundation

### Promoting California State Parks

The Foundation is the department's primary marketing partner. The Foundation undertook a branding program for the Department, a new awareness campaign and the Proud Park Partnership program to bring corporate partners to the Department. The awareness campaign includes newspapers, television, magazines, radio and outdoor posters.

The Foundation also develops more extensive promotional projects, including:

**Welcome Kit** - To be distributed by park units and other channels such as Better Business Bureaus, Visitor Centers and Welcome Centers, the Kit includes a map, children's activities,



## California State Parks Foundation (continued)

outdoor tips, valuable offers and discounts. State Parks receives a percentage of the revenue share

**Proud Partners** - Travelocity is the first official Proud Partner. State Parks receives some funding, and Travelocity contributes in-kind promotion:

- 5.2 million impressions on the Travelocity website
- A distinct travel engine on the Travelocity website that will promote visits to State Parks and State Park passes
- A co-branded travel booking engine that will be hosted on the California State Parks Foundation website and linked from the State Parks website. A commission is paid for all travel booked

Travelocity will also be a concessionaire, enabling the company to sell annual state park passes



### Adver-ticket

The Foundation is exploring options for selling the advertising space on the back of the day-use tickets dispensed through ticket machines in our parks.

SACRAMENTO  
STATE MUSEUMS AND  
HISTORIC PARKS  
**Operated by California State Parks**

California State Capitol Museum  
California State Indian Museum  
California State Railroad Museum  
Governor's Mansion State Historic Park  
Leland Stanford Mansion State Historic Park  
Old Sacramento State Historic Park  
Sutter's Fort State Historic Park

  
www.parks.ca.gov

**reserve**  
Ticket sponsored by **america**  
#1 Access Point for Outdoor Recreation  
www.ReserveAmerica.com

## Contact Information

Elizabeth Goldstein, President  
California State Parks Foundation  
800 College Ave  
PO Box 548  
Kentfield CA 94914  
Phone: 415 258-9975  
Fax: 415 258-9930  
www.calparks.org



# Commissions, Committees and Councils

## California State Parks Commissions and Committees

The Department has several commissions and committees that establish general policies for the guidance of the Director of California State Parks in the administration, protection and development of the State Park System.

- California Park and Recreation Commission 16
- California Recreational Trails Committee 17
- Off-Highway Motor Vehicle Recreation Commission 18
- State Historical Resources Commission 19

# California State Park and Recreation Commission

## Projects and Programs

The California State Park and Recreation Commission has specific authorities and responsibilities as defined in California law. These include the approval of general plans for units of the State Park System, classifying units of the System, establishing general policies for the guidance of the Director of State Parks in the administration, protection and development of the System, and recommending to the Director a comprehensive recreation policy for the state.

Appointments to the Commission require Senate confirmation.



## Benefits to California State Parks

The State Park and Recreation Commission provides guidance for the future development, management and operation of the State Park System.

## When

Year-round



## Contact Information

Louis Nastro, Assistant to the Commission  
California State Park and Recreation Commission  
PO Box 942896  
Sacramento CA 94296-0001  
Phone: 916 653-9901  
Fax: 916 653-4458  
Email: [LNastro@parks.ca.gov](mailto:LNastro@parks.ca.gov)

# California Recreational Trails Committee

## Projects and Programs

The California Recreational Trails Committee is comprised of seven members, each appointed to a 4-year term by the Governor. Members are active in local, regional and statewide trails programs, generally with personal interests in hiking, biking, or horseback riding. By statute, there are two members from northern, two members from central, and two members from southern California, with the seventh member being selected at-large.

## Benefits to California State Parks

The Committee is charged with promoting trail use and regional and statewide trail planning efforts.

## When

Quarterly meetings



## Contact Information

Steve Musillami, Manager  
California State Parks State-wide Trails Office  
PO Box 942896  
Sacramento CA 94296-0001  
Phone: 916 653-9901  
Fax: 916 653-4458  
Email: [trails@parks.ca.gov](mailto:trails@parks.ca.gov)  
[http://www.parks.ca.gov/default.asp?page\\_id=1324](http://www.parks.ca.gov/default.asp?page_id=1324)

2006 California Trails & Greenways Conference

# Off-Highway Motor Vehicle Recreation Commission

## Projects and Programs

California's Off-Highway Motor Vehicle Recreation Commission was created by the Legislature in 1982 to allow public input and provide policy guidance for the Off-Highway Vehicle (OHV) program. The Commission's duties include: allocating funds for OHV capital outlay expenditures and an OHV grants and cooperative agreements program, currently funded at \$18 million annually; certifying environmental impact reports; considering adverse impacts on property in the vicinity of State Vehicle Recreation Areas, and recommending measures to the Division to reduce those impacts.

The Commission membership is required to represent a broad range of disciplines relevant to off-highway recreation -- OHV recreation enthusiasts, non-motorized recreation interests, biologists, rural landowners, law enforcement, soil scientists, and environmental interests.

## Benefits to California State Parks

The OHMVR Commission provides guidance for the future development, management and operation of State Vehicular Recreation Areas.

## When

The OHMVR Commission meets several times per year in both Northern and Southern California. Meeting dates and times are posted on the OHMVR Division website at: [www.ohv.parks.ca.gov](http://www.ohv.parks.ca.gov)



OHMVR Commission tour of El Dorado National Forest

## Contact Information



Vicki Perez, Administrative Assistant  
OHMVR Division Headquarters  
PO Box 942896  
Sacramento CA 94296-0001  
Phone: 916 324-5801  
Fax: 916 324-1610  
Email: [ohvinfo@parks.ca.gov](mailto:ohvinfo@parks.ca.gov)

# State Historical Resources Commission

## Projects and Programs

The State Historical Resources Commission (SHRC) is a nine-member state review board, appointed by the Governor, with responsibilities for the identification, registration, and preservation of California's cultural heritage. The SHRC meets at least four times per year in various locations around the state to give citizens an opportunity to participate in the public hearings.



Old Town San Diego SHP

## Benefits to California State Parks

The purpose of the State Historical Resources Commission, the Office of Historic Preservation and California State Parks, in partnership with the people of California, is to preserve and enhance California's irreplaceable historic heritage as a matter of public interest so that its vital legacy of cultural, educational, recreational, aesthetic, economic, social, and environmental benefits will be maintained and enrich the lives of present and future generations.



China Camp SP

**When** Year-round

## Contact Information

M. Wayne Donaldson, State Historic Preservation Officer  
Office of Historic Preservation  
PO Box 942896  
Sacramento CA 94296-0001  
Phone: 916 653-6624  
Fax: 916 653-9824  
[http://ohp.parks.ca.gov/default.asp?page\\_id=1067](http://ohp.parks.ca.gov/default.asp?page_id=1067)



Angel Island SP



## Related Commissions and Councils

The Department also works with Commissions, Committees and Councils affiliated with state agencies with missions similar to those of the Department, providing them with guidance and working to establish cooperative programs and projects. The following is a representative sampling of Related Commissions and Councils and is not purported to be a complete list.

• Bay Area Open Space Council	22
• California Advisory Committee on Geographic Names	23
• California Arts Council	24
• California Biodiversity Council	25
• California Coastal Commission	26
• California Energy Commission	27
• California Film Commission	28
• California Mapping Coordinating Committee	29
• California Travel and Tourism Commission	30
• Central Valley Joint Venture	31
• Delta Protection Commission	32
• Native American Heritage Commission	33
• San Francisco Bay Conservation and Development Commission	34

# Bay Area Open Space Council

## Projects and Programs

The Bay Area Open Space Council is a collaborative of over fifty-five member organizations actively involved in permanently protecting and stewarding important parks, trails and agricultural lands in the nine-county San Francisco Bay Area. The Council's vision is to protect an additional one million acres of open space, thus doubling the amount of protected lands in the region.

## Benefits to California State Parks

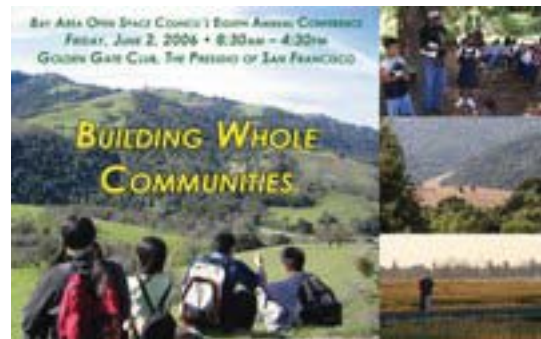
The Council offers public and non-profit managers and their representatives the opportunity to meet with their peers from throughout the region to share ideas, opportunities, problems and solutions.

## When

Year-round

## Contact Information

Bettina Ring, Executive Director  
Bay Area Open Space Council  
631 Howard St #510  
San Francisco CA 94105  
Phone: 415 460-1540  
[www.openspacecouncil.org](http://www.openspacecouncil.org)





# California Advisory Committee on Geographic Names

## Projects and Programs

The purpose of California Advisory Committee on Geographic Names (CACGN) is to provide recommendations to the U.S. Board on Geographic Names regarding California names for official use in federal publications. The California Resources Agency, with one voting member each from its Departments of Conservation, Fish and Game, Forestry and Fire Protection, Parks and Recreation, and Water Resources, is the CACGN executive sponsor. The USDI Bureau of Land Management and U.S. Geological Survey, and the USDA Forest Service are represented as CACGN advisory members.

## Benefits to California State Parks

Membership in CACGN allows the department to participate in the determination of geographic names within the department's holdings.

## When

Year-round

## Contact Information

Dave Wagner, CACGN Chair  
Regional Geologic Mapping Project  
California Geological Survey  
801 K St, MS 12-31  
Sacramento CA 95814  
Phone: 916 324-7380  
[www.cacgn.ca.gov](http://www.cacgn.ca.gov)

# California Arts Council

## Projects and Programs

The California Arts Council is a state agency governed by an 11-member council appointed by the Governor and the Legislature to advance the state through the arts and creativity, with an emphasis on children and underserved communities. Council members and staff have expertise in the creative industries, arts education, community development, state and local government, and the nonprofit and for-profit sectors. The Council provides information on grants, events, and opportunities for art and culture throughout the state.

## Benefits to California State Parks

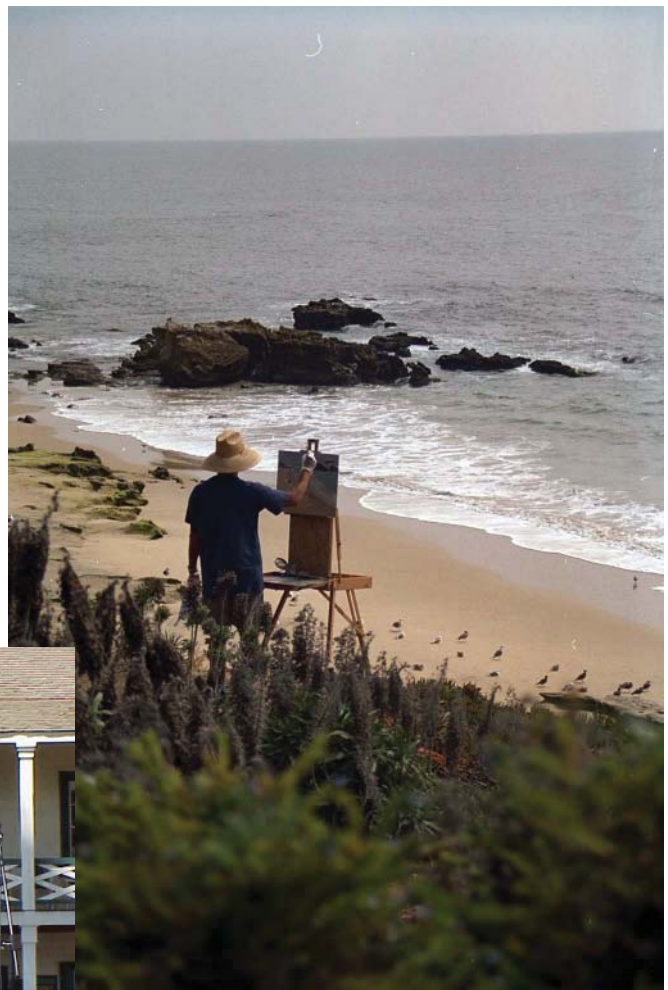
California State Parks provides services, facilities, preservation, and information for culture and the arts.

## When

Year-round

## Contact Information

Muriel Johnson, Director  
California Arts Council  
1300 I St, Ste 930  
Sacramento CA 95814  
Phone: 916 322-6555 or 800 201-6201  
Fax: 916 322-6575  
Email: [info@caartscouncil.com](mailto:info@caartscouncil.com)  
[www.cac.ca.gov](http://www.cac.ca.gov)



Monterey SHP

# California Biodiversity Council

## Projects and Programs

The California Biodiversity Council (CBC) was formed in 1991 to improve coordination and cooperation between the various resource management and environmental protection organizations at federal, state, and local levels. Strengthening ties between local communities and governments has been a focus of the Council by way of promoting strong local leadership and encouraging comprehensive solutions to regional issues.

The Council's purpose is to discuss, coordinate, and assist in developing strategies and complementary policies for conserving biodiversity. Members exchange information, resolve conflicts, and promote development of regional conservation practices.

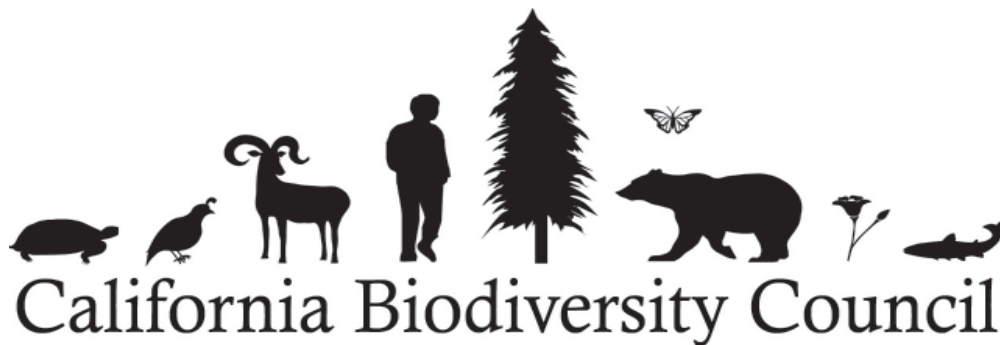
The Council has 40 members, including ten regional associations of county supervisors and governments, 16 state agencies, 12 federal agencies, the University of California, and the California Association of Resource Conservation Districts.

## Benefits to California State Parks

CBC members exchange information on natural resource conservation issues, create partnerships, and promote development of regional conservation practices to preserve biodiversity.

## When

The Council meets 2 - 3 times per year.



## Contact Information

Lauren McNeas  
Communications Coordinator  
California Biodiversity Council  
c/o CDF Fire and Resource Assessment Program  
PO Box 944246  
Sacramento CA 94244-2460  
Phone: 916 445-5845  
Fax: 916 324-1180  
[www.ceres.ca.gov/biodiv](http://www.ceres.ca.gov/biodiv)

# California Coastal Commission

## Projects and Programs

The purpose of the California Coastal Commission is to protect, conserve, restore, and enhance environmental and human-based resources of the California coast and ocean for environmentally sustainable and prudent use by current and future generations.

The Coastal Commission coordinates the annual California Coastal Cleanup Day and the Year-round Adopt-A-Beach Program. Coastal Cleanup Day is the premier volunteer event focused on the marine environment in the country. On this day, 50,000 volunteers turn out to over 750 cleanup sites statewide. Since the program started in 1985, nearly 750,000 Californians have removed more than 11 million pounds of debris from our state's shorelines and coast.



San Diego County Coastal Cleanup Day.  
Photo: CA Coastal Commission



Los Angeles County Coastal Cleanup Day. Year-round  
Photo: CA Coastal Commission

## Benefits to California State Parks

Many of California's State Parks benefit from Coastal Cleanup and Adopt-a-Beach Day each year. The clean up effort is not restricted to ocean beaches, but extends to many waterways.

## When

## Contact Information

Peter Douglas, Executive Director, California Coastal Commission  
45 Fremont St, Ste 2000, San Francisco CA 94105-2219  
Phone: 415 904-5200, Fax: 415 904-5400  
[www.coastal.ca.gov](http://www.coastal.ca.gov)

# California Energy Commission

## Projects and Programs

It is the California Energy Commission's mission to assess, advocate and act through public/private partnerships to improve energy systems that promote a strong economy and a healthy environment.

The California Energy Commission is the state's primary energy policy and planning agency. Created by the Legislature in 1974, the Commission has five major responsibilities:

- Forecasting future energy needs and keeping historical energy data
- Licensing thermal power plants 50 megawatts or larger
- Promoting energy efficiency through appliance and building standards
- Developing energy technologies and supporting renewable energy
- Planning for and directing state response to energy emergency

## Benefits to California State Parks

California State Parks is committed to helping California achieve its goal of generating 20% of the state's electricity from renewable energy by 2010.

**When** Year-round

## Contact Information

California Energy Commission  
Media and Public Communications  
Office  
1516 Ninth Street, MS-29  
Sacramento CA 95814-5512  
Phone: 916 654-4287  
[www.energy.ca.gov](http://www.energy.ca.gov)



Wind Turbines, Altamont Pass

# California Film Commission

## Projects and Programs

The California Film Commission (CFC) serves as the state's primary liaison between the film production community and all levels of government, including State Parks.

The CFC works to enhance the economic climate in California by increasing the number of film and TV productions and keeping vital industry jobs in the state.

The CFC supports the California film production industry by offering support services, facilitating filming on public property, and providing filmmakers with low cost alternatives when filming in the state. These services allow a production company to access all that California has to offer. The Commission has an advisory board of 21 members appointed by the Governor, Senate Pro Tem and Speaker of the Assembly. There are several ex-officio commissioners.



## Benefits to California State Parks

The State Parks Director is an ex-officio member of the Film Commission Board, providing representation of the many opportunities for filming in California's State Parks.



LA Purisima Mission SHP

California State Parks also has a full time staff member serving as liaison to the film industry.

## When

Year-round

## Contact Information

Amy Lemisch, Director  
California Film Commission  
7080 Hollywood Blvd, Ste 900  
Hollywood CA 90028  
Phone: 323 860-2960  
Fax: 323 860-2972  
Email: [ALemisch@film.ca.gov](mailto:ALemisch@film.ca.gov)  
[www.film.ca.gov](http://www.film.ca.gov)

# California Mapping Coordinating Committee

## Projects and Programs

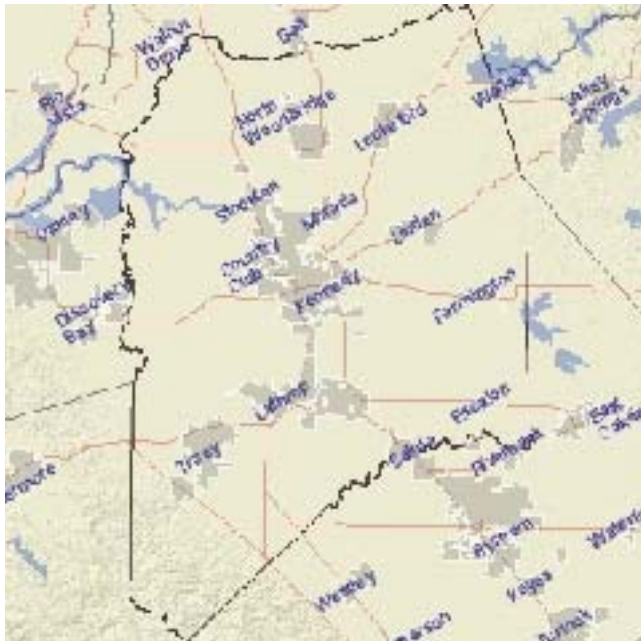
The California Mapping Coordinating Committee (CMCC) is comprised of both management and technical representatives from various boards, departments, offices, conservancies, and commissions throughout California State government that use geographic information system (GIS) technology. The CMCC reaches out to State agencies and fosters collaboration within and outside of State government on the development and use of geographic data, services and technologies in pursuit of better public service.

## Benefits to California State Parks

Participation in the CMCC gives State Parks access to aerial photography, remote sensed imagery and land use data, including elevation, administrative boundaries, government ownership and transportation features, that would be expensive or difficult to acquire with department resources alone.

## When

Year-round



## Contact Information

California Spatial Information Library  
900 N St  
Sacramento CA 95814  
Phone: 916 653-1369  
[www.gis.ca.gov/cmmc.epi](http://www.gis.ca.gov/cmmc.epi)

# California Travel and Tourism Commission

## Projects and Programs

California State Parks are recognized as major travel and tourism destinations. State Parks participates in relevant California Travel and Tourism Commission (CTTC) marketing programs, including the annual Visitors Guide, and Driving Tours. California State Parks is also a member of the California Cultural and Heritage Tourism Council. The California Cultural and Heritage Tourism Council was formed in 2004 through a memorandum of understanding, bringing together federal, state, tribal, local, non-profit, corporate and private arts, heritage and tourism organizations and interests to promote and enhance the joint benefits of cultural and heritage resource preservation and tourism promotion.

## Benefits to California State Parks

The CTTC marketing programs have national and international scope. Participation in these efforts makes California State Parks visible to an immense audience of potential visitors.

## When

Year-round

## Contact Information

Marc Sapoznik, Publications and Consumer Outreach Manager  
California Travel and Tourism Commission  
980 9th St, Ste 480  
Sacramento CA 95814  
Phone: 916 444-4429  
msapoznik@cttc1.com  
www.visitcalifornia.com



Photo: California Travel and Tourism Commission



# Central Valley Joint Venture

## Projects and Programs

The Central Valley Joint Venture (CVJV) is one of 17 Joint Venture partnerships in the United States, established under the North American Waterfowl Management Plan, and funded under the annual Interior Appropriations Act. The CVJV brings together conservation organizations, public agencies, private landowners and other partners interested in the conservation of bird habitat within California's Central Valley. The Central Valley Joint Venture works collaboratively through diverse partnerships to protect, restore, and enhance wetlands and associated habitats for waterfowl, shorebirds, waterbirds, and riparian songbirds, in accordance with conservation actions identified in the Joint Venture's Implementation Plan.

## Benefits to California State Parks

Participation in Central Valley Joint Venture cooperative projects increase the efficiency of managing public lands.

## When

Year-round

## Contact Information

Ruth Ostroff, Assistant  
U.S. Fish and Wildlife  
Service  
2800 Cottage Way, Ste  
W-1916  
Sacramento CA 95825  
Phone: 916 414-6460  
Fax: 916 414-6512  
Email: [ruth\\_ostroff@fws.gov](mailto:ruth_ostroff@fws.gov)  
[www.cvjv.org](http://www.cvjv.org)



Photo: Dale Garrison, US Fish & Wildlife Service

# Delta Protection Commission

## Projects and Programs

The Delta Protection Commission is a State Agency, created by the Delta Protection Act of 1992. As specifically provided for in the Act, members of the Commission include: landowners from north, south, west, and central Delta reclamation districts; a member of the County Board of Supervisors from each of the five Delta counties (Sacramento, San Joaquin, Contra Costa, Yolo and Solano); a representative from the Sacramento Area Council of Governments, San Joaquin Council of Governments, and the Association of Bay Area Governments; and high level leaders from the California Departments of Fish and Game, Parks and Recreation, Boating and Waterways, Water Resources, Food and Agriculture, and the State Lands Commission.

As called for in the Act, a Land Use and Resource Management Plan for the Primary Zone of the Delta was prepared and adopted by the Commission in 1995 and revised in 2002. The Management Plan sets out findings, policies, and recommendations resulting from background studies in the areas of environment, utilities and infrastructure, land use, agriculture, water, recreation and access, levees, and marine patrol/boater education/safety programs. The Primary Zone is a portion of the "Legal Delta", defined in Section 12220 of the Water Code.

In conformance with the provisions of the Act, local government general plans are to provide for consistency with the provisions of the Management Plan. The Commission serves as an Appeal body in the event an action of a local entity on a project located within the Primary Zone is challenged as being inconsistent with the Act or the Management Plan. The Commission's Land Use and Resource Management Plan can be accessed on the Commission's web site: [www.delta.ca.gov](http://www.delta.ca.gov).

## Benefits to California State Parks

Participation in the Delta Protection Commission enables the department to be involved in protection of the natural resources of the Delta.

**When** On-going

### Contact Information

Linda Fiack, Executive Director  
14215 River Road  
P.O. Box 530  
Walnut Grove CA 95690  
Phone: 916 776-2292  
Fax: 916 776-2293  
Email: [dpc@citlink.net](mailto:dpc@citlink.net)  
[www.delta.ca.gov](http://www.delta.ca.gov)



Windsurfing in the Delta at Brannan Island SRA

# Native American Heritage Commission

## Projects and Programs

The purpose of the Native American Heritage Commission is to provide protection to Native American burials from vandalism and inadvertent destruction, provide a procedure for the notification of most likely descendants regarding the discovery of Native American human remains and associated grave goods, bring legal action to prevent severe and irreparable damage to sacred shrines, ceremonial sites, sanctified cemeteries and places of worship on public property, and maintain an inventory of sacred places.

## Benefits to California State Parks

The Native American Heritage Commission works on an ongoing basis with State Parks for the repatriation of Native American human remains, development of the California Indian Heritage Center, training of CSP employees in cultural matters, gathering of native plants for traditional purposes, and consultation with local tribes.



Little Petroglyph Canyon.  
Photo: Philomene Smith



## When

Year-round

## Contact Information

Larry Myers, Executive Secretary  
Native American Heritage  
Commission  
915 Capitol Mall, Room 364  
Sacramento CA 95814  
Phone: 916 653-4082  
Email: [nahc@pacbell.net](mailto:nahc@pacbell.net)  
[www.nahc.ca.gov/](http://www.nahc.ca.gov/)

# San Francisco Bay Conservation and Development Commission

## Projects and Programs

The Bay Conservation and Development Commission (BCDC) is dedicated to the protection and enhancement of San Francisco Bay and to the encouragement of the Bay's responsible use. BCDC has become an integral part of Bay governance by recognizing that local governments acting alone cannot fully address regional issues and by providing an effective mechanism to focus state and federal laws and policies on a regional resource of national significance.

## Benefits to California State Parks

Partnership with the BCDC allows the department to participate in recreation planning in the San Francisco Bay Area.

## When

Year-round

## Contact Information

Will Travis, Executive Director  
San Francisco Bay Conservation and  
Development Commission  
50 California St, Ste 2600  
San Francisco CA 94111  
Phone: 415 352-3600  
[www.bcdc.ca.gov](http://www.bcdc.ca.gov)



Photo: BCDC



Oakland View. Photo: BCDC

# Interpretation and Education Partners

Interpretation and education about California’s natural, cultural and recreational resources is often a collaborative process. California State Parks lends artifacts and exhibits to established visitor centers and museums, sharing department resources and expertise to help educate the public. Cooperating Associations work hand in hand with California State Parks to interpret park resources. Non-profit organizations help educate the public by bringing students to California State Parks to experience and study California’s unique resources up close and personal. Recreation enthusiasts help educate the public on safety for both the resources and the visitors. The following is a representative sampling of Interpretation and Education Partners and is not purported to be a complete list.

# ATV Safety Institute

## Projects and Programs

The ATV Safety Institute (ASI) was formed as a non-profit division of the Specialty Vehicle Institute of America® (SVIA) to implement an expanded national program of all terrain vehicle (ATV) safety education and awareness. Their goal is to promote the safe and responsible use of ATVs, thereby reducing accidents and injuries.

## Benefits to California State Parks

The ASI system supplies the core curriculum to State Park employees who provide safety training to kids aged 12-16 in the ATV portion of the Off-Road Police Activities League program.

## When

Programs are conducted Year-round at State Vehicular Recreation Areas (SVRA).



## Contact Information

ATV Safety Institute  
2 Jenner St, Ste 150  
Irvine CA 92618-3806  
Phone: 949 727-3727  
[www.atvsafety.org](http://www.atvsafety.org)



SVIA Training Session. Photo:ASI

# California Environmental Education Interagency Network

## Projects and Programs

California State Parks is an active member of the California Environmental Education Interagency Network (CEEIN), a state government consortium of environmental educators representing departments, boards and commissions of the California Department of Education, California Environmental Protection Agency, the Resources Agency of California and the Department of Food and Agriculture. CEEIN fosters broad understanding of the State's environmental and cultural resources while affirming that education is essential to the development of understanding and respect for the environment. The CEEIN partnership provides a forum for its members to share resources, programs and materials with California's public schools and students in grades kindergarten through university. This partnership is solidified by a memorandum of understanding, which has been signed by each secretary of the aforementioned agencies.

## Benefits to California State Parks

The primary goals of CEEIN are to develop a unified response to the environmental education needs of California's educators and local governments, and to assist with statewide educational reform movements. CEEIN members meet monthly to discuss and share information about national and statewide environmental education efforts. CEEIN accomplishments include the Curricula and Compendia Project; a partnership with The Walt Disney Company to promote a statewide environmental education program and competition for fifth grade classes called the Jiminy Cricket's Environmental Challenge; supporting the California Regional Environmental Education Community (CREEC) network; establishing an outreach program that includes development and distribution of the CEEIN brochure, conducting workshops designed specifically for educators, and staffing exhibits booths at environmental conferences and fairs.

## When

Year-round

## Contact Information

Donna Pozzi  
Chief of Interpretation and Education  
California State Parks  
P.O. Box 942896  
Sacramento CA 94296-0001  
Phone: 916 653-4643  
Email: [dpozz@parks.ca.gov](mailto:dpozz@parks.ca.gov)  
[www.calepa.ca.gov/education/CEEIN](http://www.calepa.ca.gov/education/CEEIN)



# California Exhibition Resources Alliance

## Projects and Programs

The California Exhibition Resources Alliance (CERA) is a network of professionally operated museums and cultural organizations that collaborate to create and tour smaller, affordable, high quality exhibitions that enhance civic engagement and human understanding.

CERA exhibitions explore history, art, natural science, and contemporary issues through photography, artifacts, stunning image and text panels, and hands-on educational materials.

Most recently, an exhibit developed jointly by the California State Parks and the California Native American community entitled "Discovery, Devastation, Survival: California Indians and the Gold Rush" has toured throughout California. The exhibition includes:

- 19 exhibition panels with text and graphics (approximately 75 linear feet)
- Exhibition manual
- Press kit
- Educational materials

## Benefits to California State Parks

California State Parks lends artifacts and exhibits to established visitor centers and museums, sharing department resources and expertise to help educate the public. Reciprocal exhibits are also available, allowing State Parks to benefit from exhibits created by other organizations.



## When

Year-round

## Contact Information

Lisa Eriksen, Executive Director  
California Exhibition Resources Alliance  
4365 Terrabella Wy  
Oakland CA 94619  
Phone: 510 336-7062  
Fax: 510 336-1613  
Email: [ceraexhibits@earthlink.net](mailto:ceraexhibits@earthlink.net)  
[www.ceraexhibits.org](http://www.ceraexhibits.org)



Hands on program at the Museum of History and Art, Ontario, CA. Photo: CERA



# California Institute for Biodiversity

## Projects and Programs

The California Institute for Biodiversity (CIB) is a Bay Area-based non-profit organization dedicated to improving science literacy, environmental education, and the appropriate use of technology in classrooms throughout the state. By providing high-quality software for students as well as support materials and in-depth professional development opportunities for educators, CIB has improved science education in California schools.

## Benefits to California State Parks

In 2003 California State Parks and the California State Parks Foundation joined with the CIB to launch the Eureka! Series. This unique education program uses engaging learning activities and hands-on field experiences focused on California's environment to advance middle school students' science and ecological literacy. Students learn about local resources and issues, with opportunities for investigation and stewardship activities at State Parks that preserve fine examples of bio-regions.

The Coast Alive! – Land-Sea Interface program is the second regional program in the Eureka! Series. The program focuses on California's coastal ecosystems from San Luis Obispo to Sonoma County. The components of the Eureka! Series include: interactive CD-ROMs and teacher manual (both carefully aligned with California's academic standards), and hands-on training workshops for teachers. Once teachers receive training, students participate in hands-on learning opportunities at state parks that reinforce their classroom learning.

## When

School year

## Contact Information

Carol Baird, PhD, Executive Director  
California Institute for Biodiversity  
4100-10 Redwood Rd #325  
Oakland CA 94619  
Phone: 888 325-3288  
[www.calalive.org](http://www.calalive.org)  
[www.eurekaseries.org](http://www.eurekaseries.org)



# California League of Park Associations

## Projects and Programs

The California League of Park Associations (CALPA) serves as the umbrella organization for California State Park cooperating associations. The association presents an annual conference, provides resource materials, and publishes a newsletter.

## Benefits to California State Parks



Visitor Center, Humboldt Redwoods SP

CALPA can act as an unofficial conduit for information between CSP and association members. CALPA conferences provide valuable training opportunities.

## When

Year-round



Pigeon Point Light Station SHP

## Contact Information

President (2006) - Randy Widera, Friends of  
Santa Cruz State Park  
144 School St  
Santa Cruz CA 95060  
Phone: 831 429-1840  
Fax: 831 429-6748  
[randy@scparkfriends.org](mailto:randy@scparkfriends.org)  
[www.calparksleague.org](http://www.calparksleague.org)



Mt. Tamalpais Interpretive Association sales area

# The California Museum for History, Women and the Arts

## Projects and Programs

Dedicated to telling the rich history of California and its unique influence on the world of ideas, innovation, art and culture, the California Museum for History, Women and the Arts seeks to engage, educate and enlighten a broad public audience about California history. The Museum brings the state's rich and diverse history alive through the extraordinary collection of the California State Archives and other collections throughout the state. The Museum also promotes the state's artistic and cultural heritage.

## Benefits to California State Parks



"Treasures from the Trunk." Photo: CA Museum for History, Women and the Arts

California State Parks has collaborated with the Museum on several exhibits, including "California's Remarkable Women," "Treasures from the Trunk" and "Latinas: The Spirit of California." The increased visibility of artifacts from the department's collections in these exhibits heightens public awareness of the cultural resources the department maintains. The exhibits are valuable tools in the interpretation of the state's heritage.

**When**  
Opportunity driven

## Contact Information

Kelly Ann Bitz, Development  
Coordinator  
California Museum for History,  
Women and the Arts  
1020 O St  
Sacramento CA 95814  
Phone: 916 653-7524  
[www.californiamuseum.org](http://www.californiamuseum.org)



"California's Remarkable Women." Photo: CA Museum for History, Women and the Arts

# Cooperating Associations

## Projects and Programs

Cooperating Associations are non-profit charitable organizations dedicated to enhancing the educational and interpretive programs in California State Parks. Collectively the network consists of 80 associations in 278 state parks. *(Examples of four active cooperating associations may be found on the following pages. A complete list of cooperating associations can be found in the appendix.)*

Cooperating association accomplishments generally fall into three categories:

- Facilities - Associations help the state to build, restore or furnish visitor centers, museums, historic buildings and exhibit shelters.
- Programs - Interpretive programs supported by associations include guided tours, nature walks, Junior Rangers, special events, living history and environmental living programs. Hundreds of special events that occur annually are due to the dedicated partnership between cooperating associations, department staff and volunteers.
- Publications - Books, brochures, newspapers and videos about the natural and cultural history of local units that are funded by most, if not all, associations. As parks become more popular and interpretive needs increase, many associations are expanding or upgrading sales areas to offer a wider assortment of quality educational and interpretive materials.

## Benefits to California State Parks

These associations, with more than 26,000 members, provide critical funding of more than 10 million dollars annually for educational and interpretive needs that are impossible for state parks to meet.

## When

Year-round

## Contact Information

John D. Mott, Cooperating Associations Program Manager  
Interpretation and Education Division, California State Parks  
P.O. Box 942896  
Sacramento CA 94296  
Phone: 916 654-5397  
[http://www.parks.ca.gov/?page\\_id=976](http://www.parks.ca.gov/?page_id=976)

# California State Railroad Museum Foundation

## Projects and Programs

The California State Railroad Museum Foundation (CSRMF) supports the Railroad Museum's mission: to collect, preserve and interpret selected aspects of railroads and railroading, with an emphasis on California and the West, for the education, enjoyment and entertainment of the widest possible audience.

The CSRMF provides funding for ongoing support of numerous programs, both at the museum's Old Sacramento location and at the affiliated Railtown 1897 State Historic Park in Jamestown. The programs supported by CSRMF are exhibits, excursion railroad operations, library operations, membership, grant development, retail operations, facility rental, filming, interpretive publications, and volunteer recognition. The annual gross revenue of the CSRMF exceeds \$3 million.

## Benefits to California State Parks

The CSRMF raises and manages funds to support the California State Railroad Museum and assist California State Parks in carrying out the mission of the museum.

## When

Year-round

## Contact Information

Pamela Horan, Executive Director  
California State Railroad Museum  
Foundation

111 I St

Sacramento CA 95814

Phone: 916 445-5998

Fax: 916 445-5982

[www.californiastaterailroadmuseum.org](http://www.californiastaterailroadmuseum.org)

*California State Parks Partners*



California State Railroad Museum



Railtown 1897 SHP

# Doheny State Beach Interpretive Association

## Projects and Programs

The Doheny State Beach Interpretive Association actively supports the interpretive programs of Doheny State Beach. Association funding supports an interpretive center, including five aquariums, an indoor tide pool and many exhibits.



## Benefits to California State Parks

The Doheny State Beach Interpretive Association provides significant financial support that enables school programs, campfire programs, self guided tours and the Junior Ranger Buddies program.



Garibaldi. Photo: Tom Haight

## When

Year-round

## Contact Information

Steve Stirrett, President  
Doheny State Beach Interpretive Association

25300 Dana Point Harbor Drive  
Dana Point CA 92629

Phone: 949 496-6172

[www.dohenystatebeach.org](http://www.dohenystatebeach.org)



Interpretive Program, Doheny SB Visitor Center

# Friends of San Diego Wildlife Refuges, Inc.

## Projects and Programs

The Friends of San Diego Wildlife Refuges, Inc., a new cooperating association, partners with California State Parks and the US Fish and Wildlife Service for the benefit of Tijuana Estuary and other wildlife refuges in San Diego County. The Friends raise funds for interpretive and educational programs through grant, retail sales and donations.

## Benefits to California State Parks

The Friends of San Diego Wildlife Refuges, Inc., raises funds for interpretive and educational programs at the Wildlife Refuges and State Parks in San Diego County.

## When

Year-round

## Contact Information

Margie Stinson, President  
Friends of San Diego Wildlife Refuges, Inc.  
301 Caspian Way  
Imperial Beach CA 91932  
Phone: 619 575-2704  
[www.friendsofsdrefuges.org](http://www.friendsofsdrefuges.org)



Snowy Plover



Tijuana Estuary

# Waddell Creek Association

## Projects and Programs

The Waddell Creek Association operates the Rancho del Oso Nature and History Center. The center is in the southern part of Big Basin Redwoods State Park, where Waddell Creek flows into the Pacific Ocean. Through exhibits and programs, the Center provides educational and recreational activities focused on the rich natural and cultural history of the area. The Center is a former ranch house and features exhibits of native flora and fauna and local history. Nature-oriented art exhibits complement an active and varied program of events for young and old including astronomy and nocturnal creatures night programs, Ohlone craft demonstrations and fireside talks. A recent major addition is a remarkable grizzly bear exhibit symbolizing the important role grizzlies played in the history of the area.

## Benefits to California State Parks

The association is a source of financial and community support that is essential to providing quality public service and interpretation at the Rancho Del Oso sector of Big Basin Redwoods State Park.

## When

Year-round

## Contact Information

Varyl White, Interpretive Specialist  
Rancho del Oso Nature and History Center  
3600 Highway 1  
Davenport CA 95017  
Phone: 831 427-2288



Photos: Waddell Creek Association



# Interpretive Concession Contracts

## Projects and Programs

California State Parks contracts with non-profit organizations and private entities to provide interpretation and unique educational services to park visitors. These services would not be offered to the public without the assistance of these talented organizations and individuals:



Columbia SHP

Park Unit	Partner	Service Provided
Andrew Molera SP	Ventana Wildlife Society	Park operations and interpretation
California Citrus SHP	California Citrus Heritage Association	Park operations and interpretation
China Camp SP	Historic Village Operations	Interpretive retail
Columbia SHP	Various	Historic retail goods and services
Folsom Lake SRA	Associated Students of CSU Sacramento	Aquatic center operations
Fremont Peak SP	Fremont Peak Observatory	Interpretive programs
Indio Hill Palms SP	Covered Wagon Tours	Interpretive programs and park operations
Mendocino Woodlands Outdoor Center	Mendocino Woodland Camp Association	Park operations
Monterey SHP	Various	Interpretive programs and historic facility restoration
Pigeon Point Light Station	American Youth Hostel Association	Hostel operations
Point Cabrillo Light Station	North Coast Interpretive Association	Lighthouse restoration and interpretation



Whaler's Cottage, Monterey SHP

## *Interpretive Concession Contracts (continued)*

Park Unit	Partner	Service Provided
San Juan Bautista SHP	Artist in Residence	Interpretive programs
Sugarloaf Ridge SP	Valley of the Moon Observatory Association	Interpretive programs
Tahoe SRA	North Tahoe Historical Society	Museum and park operation
Wassama Roundhouse	Wassama Association	Park operations and interpretation

## Benefits to California State Parks

Interpretive activities and experiences for state park visitors

## When

Year-round

## Contact Information

Visit the Concession Program's web pages at [www.parks.ca.gov/concessions](http://www.parks.ca.gov/concessions), or contact the park units listed above for additional information on each partner.



Pigeon Point Light Station SHP

# Motorcycle Safety Foundation

## Projects and Programs

The Motorcycle Safety Foundation (MSF) provides rider safety education for motorcycle riders, and provides education on responsible recreation. They have established a comprehensive, research based system that promotes life-long learning for riders, as well as continuous professional development for its coaches. They also provide technical assistance to state training and licensing programs.

## Benefits to California State Parks

The Motorcycle Safety Foundation supplies the core curriculum to State Park employees, who then provide safety training to kids aged 10-16 in the motorcycle option of the Off-Road Police Activities League program

## When

Programs are conducted Year-round at State Vehicular Recreation Areas.



## Contact Information

Rob Gladden, Project Manager  
California Motorcyclist Safety Program  
2 Jenner St, Ste 150  
Irvine CA 92618  
Phone: 949 727-3227  
Fax: 949 727-4217  
[www.ca-msp.org](http://www.ca-msp.org)



Photo: Motorcycle Safety Foundation

# Parks Online Resources for Teachers and Students

## Projects and Programs

Parks Online Resources for Teachers and Students (PORTS) is a distance interpretation and education program developed as a collaborative effort between public schools, private industry, cooperating associations and California State Parks. This series of units of study uses the power of video conferencing and California's K-12 High Speed Network to deliver academic content standards-based instruction in the context of California State Parks. PORTS allows students, regardless of their geographic location or economic status, to talk face to face with rangers from parks throughout the state. The program provides fully developed units of study, including all the resources (lesson plans, scoring rubrics, pre and post assessments, digital video and images, etc.) needed for the support, structure, preparation, and follow-up of the live, video conference sessions. The program is designed to meet the goals of California State Parks and California public education.



## Benefits to California State Parks

PORTS allows California State Parks to deliver its message to an audience with whom it has traditionally had little success communicating. Being able to speak directly to a vastly diverse audience of young people from a wide range of geographic and socio-economic groups furthers a number of the department's strategic initiatives. The program also has the ancillary benefit of creating professional relationships at a managerial level with local education officials that can then be employed by local park staff to further their programs.

Schools benefit by having professionally developed, compelling presentations delivered to them at no cost. The students are taught the academic content standards they are required to learn while also getting a deeper understanding of the concepts presented.

Private industry benefits by having their products showcased in an environment where their value can be seen by prospective customers and their representatives can forge relationships with school officials that may result in future business opportunities.

## Examples:

PORTS has mutually beneficial partnerships with scores of entities. Here a few representative examples of those partnerships:

### Imperial County Office of Education (ICOE)

California State Parks and the ICOE are partners in a federally funded "Teaching American History" grant program. This three-year professional development grant provides

training to history teachers. California State Parks benefits by the recognition and notoriety within the education community and by receiving a great deal of technological equipment that it will keep at the conclusion of the training. The ICOE benefits by having “content experts” available for their training and by the use of California State Park facilities and resources.

### **Humboldt County Office of Education (HCOE)**

California State Parks and the HCOE are partners in an initiative to use technology to bring compelling content to a largely rural and isolated population of students. The HCOE has contributed 40 percent of a teacher personnel year to work with park staff to implement the PORTS program throughout Humboldt County. The State Parks benefit by creating close relationships with school districts throughout the county and by delivering our message to the student population. The schools benefit by learning to use technology to communicate with distant entities and by having “content experts” to help them teach academic content standards.



Desert Sands Unified School District students learn about elephant seals via a PORTS presentation from Seacliff State Beach

### **Sonora High School District (SHSD)**

California State Parks and the SHSD are partners in a program to produce PORTS units of study from their Cassina High, the district’s continuation high school. With the assistance of park staff the students are taught to use the technological equipment necessary to produce videoconferencing presentations. The students then act as the IT staff for the programs. The local park staff supplies the personnel to make the presentations. The two organizations work together on fund raising and program development. California State Parks benefit by having their message reach the local community as well as delivering thematic programs to distant students. The SHSD benefits by having a unique vocationally based program that teaches skill to their students.

### **Polycom**

California State Parks and Polycom, a technology company known for its audio and video conferencing equipment, are partners in an effort to establish the PORTS pro-

gram throughout California schools. Polycom often supplies expertise to aid in the deployment of the program and provides assistance in grant writing. Polycom has also loaned a great deal of equipment to schools so that the schools could participate in PORTS. California State Parks benefits by being able to provide more PORTS programs and Polycom benefits by the possibility that schools will later buy their equipment after seeing its value during a PORTS program.

### **AT&T**

California State Parks and AT&T, a communications company, are partners in an effort to establish the PORTS program throughout California schools. AT&T provides "Education Advocates" for many of the PORTS training programs. These AT&T employees are experts in the use of video conferencing in educational environments. California State Parks benefit by having these highly effective and professional partners available in our training, and AT&T benefits by establishing relationships with schools that may later purchase their equipment and services.

### **California's K-12 High-Speed Network (HSN)**

California State Parks and the HSN, a state funded, very powerful and extensive IT network connecting California schools, are partners in an effort to establish the PORTS program throughout California schools. California State Parks benefits because HSN provides California State Parks with staff, equipment, expertise, and network access to deliver PORTS throughout the state. The HSN benefits because we provide the type of content that this network was funded to deliver. PORTS acts as one of the "poster boys" to show the benefits the HSN can bring to schools.

### **California State University, Monterey Bay (CSUMB)**

California State Parks and CSUMB are partners in an effort to establish the PORTS program at Seacliff State Beach and deliver it to students throughout California. CSUMB has provided students and professors to aid in the planning, development, and construction of a professional video conferencing studio, including chroma-key technology. CSUMB benefits by providing a remarkably engaging manner to teach their students, and California State Parks benefits by having first class, highly technical work accomplished at a very low cost.

## **When** On-going

**Where** Programs are delivered to classrooms throughout the state from various parks. In the 2006/2007 school year most of the programs will be delivered from Seacliff State Beach, the State Capitol Museum, Crystal Cove State Park, and Anza-Borrego Desert State Park.

## **Contact Information**

Joe von Herrmann  
Interpretation and Education Division, California State Parks  
Phone: 916 947-8073  
Email: [jvonh@parks.ca.gov](mailto:jvonh@parks.ca.gov)  
[www.ports.parks.ca.gov](http://www.ports.parks.ca.gov)

# Cultural Heritage Partners

Preservation, advocacy, restoration and stewardship are the watchwords of the Department's cultural heritage partners. These organizations work with the Department to identify and safeguard cultural resources within the department's control. The following is a representative sampling of Cultural Heritage Partners and is not purported to be a complete list.

- California Council for the Promotion of History 54
- California Historical Society 55
- California Main Street Alliance 56
- California Preservation Foundation 57
- Certified Local Government Program 58
- National Trust for Historic Preservation 59
- Native American Land Conservancy 60
- PAST Foundation 61
- Santa Barbara Trust for Historic Preservation 62
- Society for California Archaeology 63
- Torres-Martinez Indian Tribe and Reservation 64

# California Council for the Promotion of History

## Projects and Programs

The California Council for the Promotion of History (CCPH) is a statewide nonprofit organization that represents almost every area of historical activity in California: government agencies, businesses, archives, local historical societies, museums, private consulting, and colleges and universities, and other educational institutions. The purpose of CCPH is to foster, facilitate, and coordinate efforts that enhance appreciation of historical heritage, application of history skills in the public and private sectors, and ensure the preservation, interpretation, and management of California's historical resources. CCPH represents historians and historical resources before government agencies, sponsors an annual awards program and a special History Day award, advertises employment opportunities, and fosters cooperative action with other California heritage organizations.

## Benefits to California State Parks

CCPH promotes professional networking and continuing education activities for historians and advocates for preservation of historical resources and funding of public history programs.

## When

Year-round; annual conference in late October



CCPH members tour the Ceasar Hotel in Tijuana during an annual conference.  
Photo: CCPH



CCPH 2005 Award winners. Photo: CCPH

## Contact Information

Paul Spitzzeri, President  
California Council for the Promotion of History  
California State University, Sacramento  
Department of History  
6000 J St  
Sacramento CA 95819-6059  
Phone: 916 278-4296  
Email: [ccph@csus.edu](mailto:ccph@csus.edu)  
[www.csus.edu/org/ccph](http://www.csus.edu/org/ccph)



# California Historical Society

## Projects and Program

The California Historical Society (CHS) is a statewide membership-based organization. Its purpose is to engage the public's interest and participation in collecting, preserving, and presenting art, artifacts, and written materials relevant to the history of California and to support historical research, publication, and educational activities.



## Benefits to California State Parks

The California Historical Society's scholarly research materials and resources are a valuable tool for the interpretation of the State Parks cultural resources.

### When

Year-round

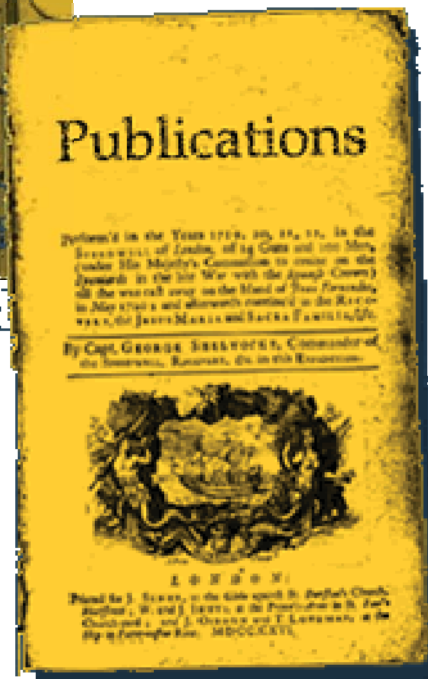
### Contact Information

David Crosson, Executive Director  
The California Historical Society  
678 Mission St

San Francisco CA 94105  
Phone: 415 357-1848  
Fax: 415 357-1850  
Email: [info@calhist.org](mailto:info@calhist.org)  
[www.calhist.org](http://www.calhist.org)



Photographic collection. Photo: CHS



Publication. Photo: CHS

# California Main Street Alliance

## Projects and Programs

The California Main Street Alliance (CAMSA) serves as the primary non-profit advocate for the principles and ideals of California Main Street, a program that strives to enhance the economic, social, cultural, and environmental well being of California's historic and traditional downtowns and neighborhood commercial districts.

CAMSA offers education and other assistance on behalf of the State of California's California Main Street program, California Main Street communities, and all communities aspiring to practice and sustain the Main Street approach to commercial revitalization.

California presently has 58 Main Street Program participants including Arcata, Oceanside, Salinas, Hanford, Grass Valley, Redding and San Diego. Encinitas and Paso Robles received two of five nationwide awards at the 2004 National Main Street Conference in New Mexico.

## Benefits to California State Parks

CAMSA works with State Parks' Office of Historic Preservation to continue and enlarge the Main Street Program.

## When

Year-round



Redding becomes a Main Street Community. Photo CAMSA



Community life on Main Street. Photo: CAMSA

## Contact Information

Howard LeVine, Executive Director  
Grass Valley Downtown Association  
Phone: 530 272-8315  
Email: [GVDA@sbcglobal.net](mailto:GVDA@sbcglobal.net)

# California Preservation Foundation

## Projects and Programs

The California Preservation Foundation, founded in 1976, is California's only statewide non-profit historic preservation education, advocacy and membership organization.

The purpose of the California Preservation Foundation is to ensure that California's rich and diverse historic resources are identified, protected and celebrated for their history and their valuable role in California's economy, environment and quality of life. The Preservation Foundation trains approximately 500+ people each year at educational workshops and training sessions on important preservation issues; publishes a quarterly news journal "California Preservation," and special publications on a variety of topics important to preservation in California; and supports preservation efforts through advocacy and legal action throughout the state.



## Benefits to California State Parks



The California Preservation Foundation provides training, research assistance, and acts as an advocate for historic preservation. State Parks plays an active part in the Foundation's annual conferences.

## When

Year-round

## Contact Information

Cindy L. Heitzman, Executive Director  
California Preservation Foundation  
5 Third St, Ste 424  
San Francisco CA 94103  
Phone: 415 495-0349  
Email: [cpf@californiapreservation.org](mailto:cpf@californiapreservation.org)  
[www.californiapreservation.org](http://www.californiapreservation.org)

# Certified Local Government Program

## Projects and Programs

The Certified Local Government (CLG) Program encourages the direct participation of local governments in the identification, evaluation, registration, and preservation of historic properties within their jurisdictions and promotes the integration of local preservation interests and concerns into local planning and decision-making processes. The CLG Program is a partnership among local governments, the State of California Office of Historic Preservation, and the National Park Service, which is responsible for administering the National Historic Preservation Program. The Office of Historic Preservation manages an annual preservation planning grant program for CLG partners. The grant application period is in the spring.



Gas Lamp District, San Diego

## Benefits to California State Parks

The CLG Program brings local preservation boards and commissions into broader land use planning and project approval processes. CLGs are obligated to involve their boards/commissions in the CEQA and Section 106 review process, as well. The views of CLGs are sought by the Office of Historic Preservation in environmental review programs and in the registration of historic properties.



Leland Stanford Mansion SHP

## When

Year-round

## Contact Information

Lucinda Woodward, CLG Coordinator  
California State Parks  
Office of Historic Preservation  
1416 Ninth St  
Sacramento CA 95814  
Phone: 916 653-9116  
[http://ohp.parks.ca.gov/default.asp?page\\_id=21239](http://ohp.parks.ca.gov/default.asp?page_id=21239)

# National Trust for Historic Preservation

## Projects and Programs

The National Trust for Historic Preservation champions preservation by providing leadership, education, advocacy, and resources to people working to preserve, improve, and enjoy the places that matter to them. Working with state and local partner organizations, community leaders, public officials, and grassroots advocacy groups, regional offices provide technical assistance, small grants, and legal interventions to support the protection, stewardship, and continued use of heritage resources. Grants typically range from \$3,000 to \$5,000 and are intended to help non-profit groups and local governments:

- conduct educational programming, outreach, or community planning
- hire consultants to provide fund raising, preservation planning, or organizational development
- provide professional engineering or architectural services



## Benefits to California State Parks

The Western Office of the National Trust has been a partner and strong advocate in legislative efforts, such as funding for the California Main Street Program, in addition to providing small grants and assistance to historic properties in California.

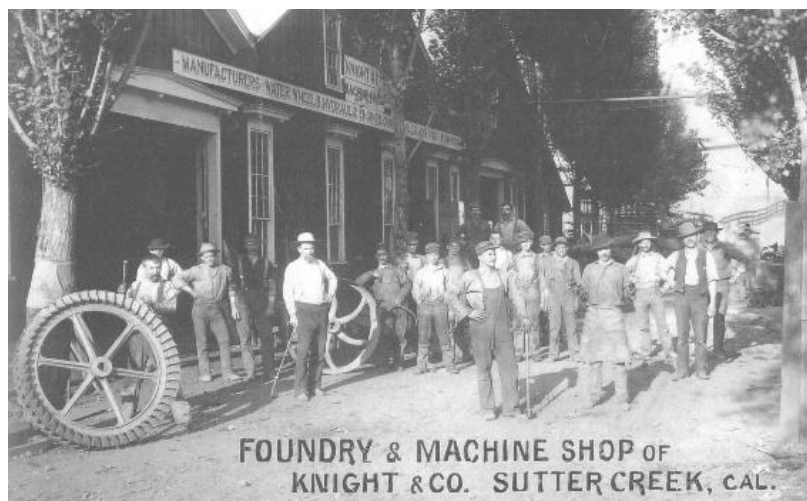
## When

Year-round

## Contact Information

Anthea M. Hartig, Ph.D.,  
Director  
National Trust for Historic  
Preservation, Western  
Office

The Hearst Building, 5 Third St, Ste 707  
San Francisco CA 94103  
Phone: 415 947-0692  
Fax: 415 947-0699  
Email: [wro@nthp.org](mailto:wro@nthp.org)  
[www.nationaltrust.org](http://www.nationaltrust.org)



Knight Foundry, Sutter Creek, CA. Photo: Knight Foundry Corporation

# Native American Land Conservancy

## Projects and Programs

The Native American Land Conservancy provides guidance and work assistance in the identification, conservation and protection of prehistoric sites and features, and current Native American cultural practices.

## Benefits to California State Parks

The Native American Land Conservancy also purchases property for California State Parks. They provide educational programs to the public and assist on-site with identification of resources to ensure management and protection of Native American sites in the Ocotillo Wells SVRA and surrounding areas.

## When

Year-round

## Contact Information

Joe Benitez or Anthony Madrigal  
Native American Land Conservancy  
PO Box 1829  
Indio CA 92202-1829  
Phone: 951  
310-5856



Rock Circle, Truckhaven Area, Ocotillo Wells SVRA

# PAST Foundation

## Projects and Programs

The PAST Foundation is a non-profit educational and research team that puts together partnerships on compelling projects in anthropology and makes the work available to students and the public through field schools, documentary film and interactive web access. The foundation has created programs in media such as the History Channel and National Geographic that have reached millions of Americans and successfully brought history to living rooms and classrooms across the country. PAST also applies for grants, such as through Save America's Treasures, to conduct archeological research in State Park units.

## Benefits to California State Parks

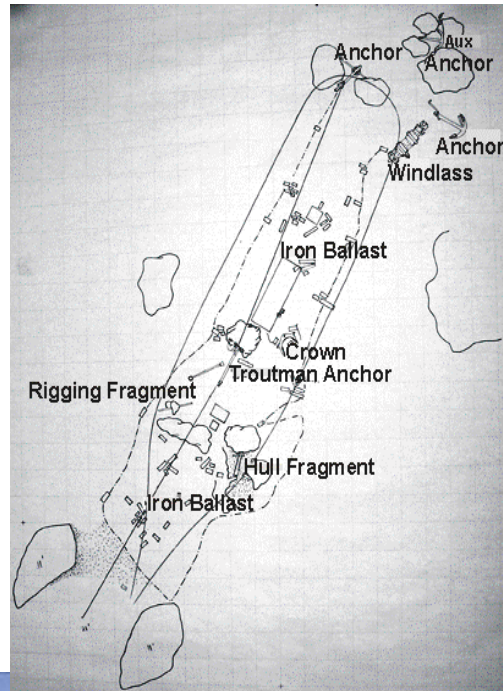
PAST worked with California State Parks on the Gold Rush era shipwreck *Frolic* at Point Cabrillo. They also conduct field schools for archaeology on state park property (open to state park staff and others).

## When

Project driven



"Ephratah," sister ship of "Frolic." Photo: PAST



Map of "Frolic" site. Photo: PAST

## Contact Information

Annalies Corbin, PhD, Founder  
and Executive Director  
PAST Foundation  
1929 Kenny Rd, Ste 200  
Columbus OH 43210  
Phone: 614 519-7447 or  
614 316-4503  
Fax: 216 674-9708  
past@pastfoundation.org  
www.pastfoundation.org

# Santa Barbara Trust for Historic Preservation

## Projects and Programs

The Santa Barbara Trust for Historic Preservation works to protect, preserve, restore, reconstruct, and interpret historic sites within Santa Barbara County. The Trust is the primary force in the reconstruction and preservation of El Presidio de Santa Barbara State Historic Park and the restoration of La Casa de la Guerra in the heart of downtown Santa Barbara. The Trust has also acquired for restoration the Rochin Adobe in downtown Santa Barbara and the Mission Santa Inés Mills complex in Solvang, CA. More recently, the Trust has begun reconstruction on the Northwest Corner of El Presidio de Santa Barbara, the fourth and final military fortress constructed by the Spanish along the coast of Alta California and currently the only restored Presidio in California.

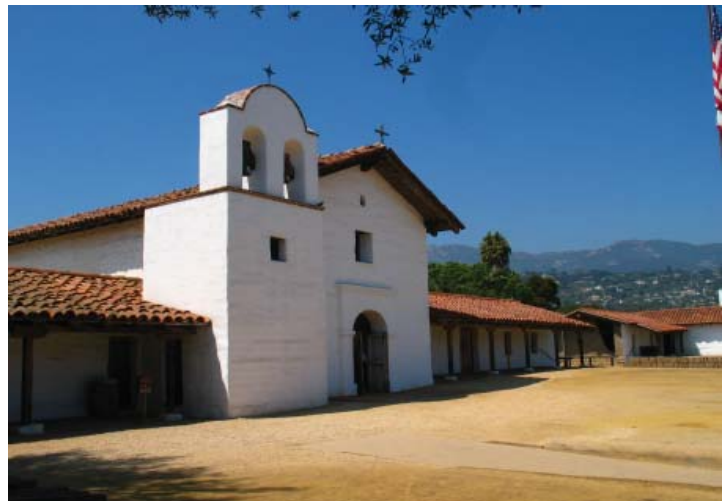
## Benefits to California State Parks

The Santa Barbara Trust for Historic Preservation operates El Presidio de Santa Barbara State Historic Park. With the help of continuing educational activities and exhibits, the Trust strives to encourage community involvement and appreciation for Santa Barbara's distinct history. The trust has also assisted with acquisition of property for El Presidio de Santa Barbara and the Santa Ines Mission Mills Project.

**When** Year-round

## Contact Information

Jarrell C. Jackman, Ph.D., Executive Director  
Santa Barbara Trust for Historic Preservation  
P.O. Box 388  
Santa Barbara, CA 93102  
*Phone:* 805 965.0093  
*Fax:* 805 568.1999  
*Email:* docjj@sbthp.org  
*www.sbthp.org*



Presidio Chapel, El Presidio de Santa Barbara SHP



# Society for California Archaeology

## Projects and Programs

The Society for California Archaeology (SCA) is a nonprofit scientific and educational organization dedicated to research, understanding, interpretation and conservation of California's heritage. The SCA promotes cooperation among archaeologists in California, and seeks to increase public appreciation and support for archaeology in California.

The California Archaeological Site Stewardship Program (CASSP) is a statewide program, directed by the Society for California Archaeology. Volunteers attend a two-day training workshop before they become site stewards. Site stewards work in their local areas, in teams coordinated by professional archaeologists who work for the land management agency responsible for the sites.

## Benefits to California State Parks

Teams of CASSP volunteers work with California State Parks, the Bureau of Land Management, and the National Park Service. The volunteers regularly visit assigned sites on public lands and report on their conditions to their local coordinating archaeologist. By consistently monitoring the sites, problems are detected early, when they can more easily be corrected.



Archaeological Dig

## When

Year-round

## Contact Information

Frank E. Bayham, President  
Society for California Archaeology Business Office  
California State University, Chico  
25 Main, Ste 101  
Chico CA 95929  
Phone: 530 898-5733  
Fax: 530 898-4220  
[www.scahome.org](http://www.scahome.org)

# Torres-Martinez Indian Tribe and Reservation

## Projects and Programs

The Torres-Martinez Indian Tribe and Reservation is concerned with the identification, conservation and protection of prehistoric sites and features, and current Native American cultural practices. They have assisted in archeological surveys of the Freeman Acquisition. State Parks is looking into partnering with them in the operation of the Freeman Acquisition cultural sites and visitor center.

## Benefits to California State Parks

The Torres-Martinez Indian Tribe and Reservation works in consultation and collaboration for management and protection of Native American sites in the Ocotillo Wells SVRA - Truckhaven areas. The expertise and historical knowledge of the Torres-Martinez tribe helps California State parks provide a more comprehensive educational program to the public on the significance of the cultural sites.

## When

Year-round

## Contact Information

Joe Loya  
Torres-Martinez Band  
of Desert Cahuilla  
Indians  
66-725 Martinez Rd  
PO Box 1160  
Thermal CA 92274  
Phone: 760 397-0300



# Natural Resource Partners

Preservation, advocacy, restoration and stewardship are the guidelines of the Department's natural resource partners. These organizations work with the Department to identify and safeguard natural resources within the department's control. The following is a representative sampling of Natural Resource Partners and is not purported to be a complete list.

- California Invasive Plant Council 66
- California Native Plant Society 67
- Desert Protective Council 68
- InterTribal Sinkyone Wilderness Council 69
- Mill Creek Advisory Committee 70
- Partners in Flight 71
- Partners of the Monterey Bay National Marine Sanctuary 72
- Partners of the Tijuana River National Estuarine Research Reserve 73
- Santa Lucia Conservancy 74
- Southern California Wetlands Recovery Project 75
- The Dunes Collaborative 76
- Universities of California and California State Universities 77

# California Invasive Plant Council

## Projects & Programs

The California Invasive Plant Council's (Cal-IPC) mission is to protect California wildlands from invasive plants through restoration, research and education.

Cal-IPC is a 501(c)(3) nonprofit organization governed by a board of directors who work with staff on programs and strategic direction. Membership includes public and private land managers, ecological consultants and researchers, planners, volunteer stewards, and concerned citizens. Allied invasive plant councils exist in many other states, though Cal-IPC has the largest membership.

## Benefits to California State Parks

Cal-IPC works closely with agencies, industry and other nonprofit organizations to identify areas of infestation and develop appropriate removal plans.

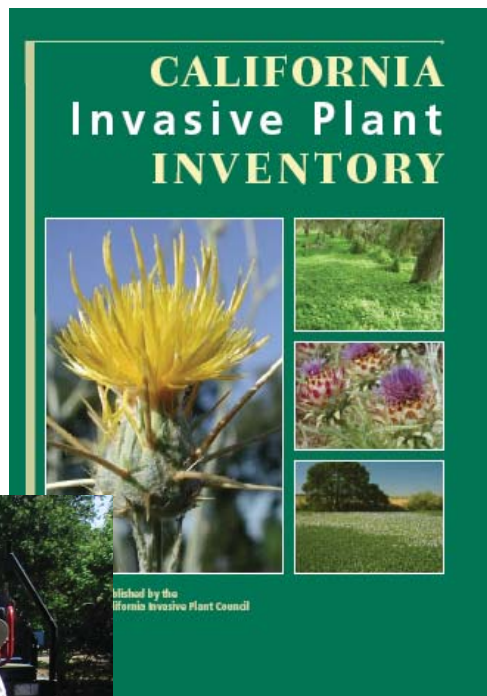
**When** Year-round

## Contact Information

Doug Johnson, Executive Director  
Mailing Address:  
California Invasive Plant Council  
1442-A Walnut St. #462  
Berkeley CA 94709

Physical address:  
2560 9th Street, #216  
Berkeley CA 94710

Phone: 510 843-3902  
Fax: 510 217-3500  
Email: [info@cal-ipc.org](mailto:info@cal-ipc.org)



# California Native Plant Society

## Projects and Programs

Originally formed in 1965 in the East Bay region, the California Native Plant Society (CNPS) is a statewide non-profit organization of amateurs and professionals with a common interest in California's native plants. The Society, working through its local chapters, seeks to increase understanding of California's native flora and to preserve this rich resource for future generations. Membership is open to all. Members have diverse interests including natural history, botany, ecology, conservation, photography, drawing, hiking, and gardening. CNPS chapter projects include plant sales, trips, demonstration gardens, speaker programs, weed removal, conservation projects, rare plant monitoring, plant community sampling, and educational outreach.

## Benefits to California State Parks

The Prairie City State Vehicular Recreation Area staff is currently working with CNPS on an interpretation plan that will be part of the park's Environmental Training Center. The CNPS role is to provide technical assistance on the care of various plants at the facility, and to assist in the creation and development of educational institutions with projects and programs at the facility.

## When

Project specific

## Contact Information

Amanda Jorgenson, Executive Director  
California Native Plant Society  
2707 K Street, Ste 1  
Sacramento CA 95816-5113  
Phone: 916 447-2677  
Fax: 916 447-2727  
Email: [cnps@cnps.org](mailto:cnps@cnps.org)  
[www.cnps.org](http://www.cnps.org)



Plan for the Environmental Training Center at Prairie City SVRA

# Desert Protective Council

## Projects and Programs

The purpose of the Desert Protective Council is to promote, celebrate and protect the natural and cultural wonders of California's southwest deserts through education, advocacy and science.

## Benefits to California State Parks

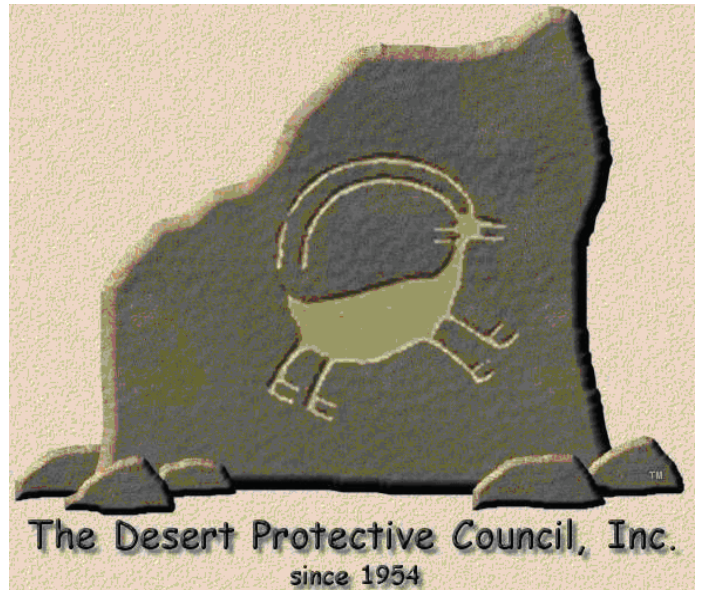
The Desert Protective Council is partnered with Ocotillo Wells SVRA on the Native Plant Garden and a new nature trail.

## When

Project driven

## Contact Information

Nick Ervin, President  
Desert Protective Council  
PO Box 3635  
San Diego CA 92163-1635  
Email: [terryweiner@sbcglobal.net](mailto:terryweiner@sbcglobal.net)  
[www.dpcinc.org](http://www.dpcinc.org)



Native Plant Garden, Ocotillo Wells SVRA

# InterTribal Sinkyone Wilderness Council

## Projects and Programs

The InterTribal Sinkyone Wilderness Council, a 501(c)(3) non-profit, is comprised of 10 federally recognized Northern California tribes with direct ties to the Sinkyone region. The Council is working to reestablish indigenous Indian stewardship within the Sinkyone region of Northern California through cultural land conservation, habitat rehabilitation, and traditional resource management. The Council established the 3,845-acre InterTribal Sinkyone Wilderness, the first of its kind in the country, to support and sustain local traditional Indian cultural land use, and to restore and protect the Sinkyone's cultural-natural resources and wilderness values for present and future generations of indigenous Indian peoples. Council project areas include cultural resource protection, conservation planning, salmon stream restoration, watershed rehabilitation, and education. The InterTribal Sinkyone Wilderness is located adjacent to and east of the Sinkyone Wilderness State Park.

## Benefits to California State Parks

The Council and State Parks work cooperatively to address mutual concerns relating to natural and cultural resource protection and public recreation within the Sinkyone Wilderness State Park and the InterTribal Sinkyone Wilderness land. The Council has secured funding support for Sinkyone State Park projects and contributes to cultural interpretation/ education programs within the North Coast Redwoods District. With the assistance of the North Coast Redwoods District, the Council is developing public access, low-impact campgrounds and trails on the InterTribal land that will link directly to the Lost Coast Trail in the adjacent Sinkyone State Park. The Council also conducted a training program for tribal heavy equipment operators who assisted with the decommissioning of abandoned logging roads in the Sinkyone State Park. The Council was extensively involved in all phases of the General Plan process for the Sinkyone Wilderness State Park, which the State Parks Commission approved on November 3, 2006.

**When** Year-round

## Contact Information

Hawk Rosales, Executive Director  
InterTribal Sinkyone Wilderness Council  
P.O. Box 1523  
Ukiah, CA 95482  
Phone: 707 463-6745  
(Please call for email and fax information)



Chon-te-as-cho (California Condor). Drawing by Godfrey John, Jr. © by InterTribal Sinkyone Wilderness Council

# Mill Creek Advisory Committee

## Projects and Programs

The purpose of the Mill Creek Advisory Committee is to advise the California Department of Parks and Recreation on the development and implementation of interim and long-term management plans or General Plan for the Mill Creek property adjacent to Del Norte Coast Redwoods and Jedediah Smith Redwoods State Parks consistent with the primary goal for the property, which is to restore late seral forest characteristics and associated natural functions that maximize benefits to the salmonid species of its streams and wildlife associated with late seral forest. The Committee also seeks funding to implement interim and long-term management plans for the property.

## Benefits to California State Parks

The Mill Creek Advisory Committee promotes synergy of local and regional support for the Mill Creek property. Members of Committee include the Save-the-Redwoods League, county representatives, the Wildlife Conservation Board, the Smith River Alliance, the Coastal Conservancy, the State Department of Fish & Game, the National Park Service, and other organizations and agencies interested in the Mill Creek property.

**When** Year-round

## Contact Information

Bruce Lynn, Sector Superintendent  
Redwood Coast Sector, North Coast  
Redwoods District  
1111 Second Street  
Crescent City CA 95531  
Phone: 707 465-7330  
Fax: 707 464-1812  
Email: [blynn@parks.ca.gov](mailto:blynn@parks.ca.gov)



Mill Creek Property



# Partners in Flight

## Projects and Programs

Partners in Flight (PIF) is a cooperative effort involving partnerships among federal, state and local government agencies, philanthropic foundations, professional organizations, conservation groups, industry, the academic community and private individuals. PIF emphasizes conservation of land bird species not covered by existing conservation initiatives. The California Partners in Flight (CalPIF) prepares Bird Conservation Plans for the major California habitat types to set conservation priorities and specific habitat management recommendations that can be used and implemented in the field by both government land managers and private landowners. These practical recommendations can be incorporated in resource management plans and development plans.

## Benefits to California State Parks

California State Parks field staff is encouraged to use the PIF products and include bird conservation in their project planning. They are kept informed of PIF meetings, products, information and references through the Natural Resources Division newsletter. PIF representatives have also made presentations at Natural Resources training sessions to introduce field staff to the effort.

**When** Year-round

## Contact Information

Janet Didion, Environmental Scientist  
Natural Resources Division  
California State Parks  
Phone: 916 653-6340  
Email: [jdidi@parks.ca.gov](mailto:jdidi@parks.ca.gov)  
[www.partnersinflight.org](http://www.partnersinflight.org)



Photos: G.Woods, [www.woodshots.com](http://www.woodshots.com)



© G. Woods

# Partners of the Monterey Bay National Marine Sanctuary

## Projects & Programs

The Monterey Bay National Marine Sanctuary (MBNMS) is a Federally protected marine area offshore of California's central coast. Stretching from Marin to Cambria, the MBNMS encompasses a shoreline length of 276 miles and 5,322 square miles of ocean, extending to an average distance of 30 miles from shore. At its deepest point, the MBNMS reaches down 10,663 feet (more than two miles). It is our nation's eleventh Marine Sanctuary and its largest- larger than Yosemite or Yellowstone National Parks. Resource protection activities use a variety of means to reduce or prevent detrimental human impacts, including collaborative planning efforts, regulations and permits, emergency response activities, enforcement and education. Education and outreach is used as a critical element in enhancing understanding and stewardship of this national treasure, ranging from public events and interactive teacher workshops to extensive written materials.

## Benefits to California State Parks

Sanctuary research and monitoring programs evaluate the status and health of marine species, habitats and ecosystems, provide critical information to resource managers, and coordinate activities with the array of world-class research institutions in the region. The Sanctuary encompasses several districts of California State Parks. State Parks serves on the Sanctuary's Advisory Council, along with other state and federal departments, non-profits and business representatives.

## When

Year-round

## Contact Information

Paul Chetirkin  
Sanctuary Advisory Council Coordinator  
MBNMS  
299 Foam St.  
Monterey, CA 93940  
Phone: 831 647-4210  
Fax: 831 647-4250  
Email: [paul.chetirkin@noaa.gov](mailto:paul.chetirkin@noaa.gov)



Big Sur Coast

# Partners of the Tijuana River National Estuarine Research Reserve

## Projects and Programs

The Tijuana River Estuarine Research Reserve is one of 27 Research Reserves in the United States. Each reserve is managed by a state agency in cooperation with the National Oceanic and Atmospheric Administration (NOAA). The Tijuana River facility is managed by California State Parks with essential support from the U.S. Fish and Wildlife Service and the Southwest Wetlands Interpretive Association (a non-profit partner). Programs include estuarine research, public education, salt marsh protection/restoration and oversight of development and zoning of sensitive estuarine lands on both sides of the United States/Mexico border.

## Benefits to California State Parks

Estuary staff, dedicated volunteers, students and other interested agencies do a great deal of research, restoration and monitoring at the Tijuana Estuary. Their experience and the information and data they gather will lead to future projects as well as a better understanding of estuaries and how to enhance them throughout the biogeographic region from Point Conception, California to San Quintin, Mexico. This 600 mile coastline includes 32 units of the California State Park System.

## When

Year-round

## Contact Information

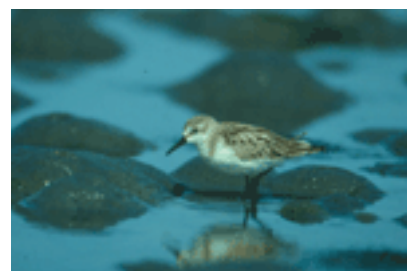
Southwest Wetlands Interpretive Assoc.  
708a Seacoast Dr.  
Imperial Beach CA 91932  
Phone: 619 575-0550  
[www.swia4earth.org](http://www.swia4earth.org)

Tijuana Slough NWR  
301 Caspian Way  
Imperial Beach CA  
Phone: 619 575-2704  
[www.fws.gov/sandiegorefuges/Tijuana.htm](http://www.fws.gov/sandiegorefuges/Tijuana.htm)

Estuarine Reserves Division, N/ORM5  
Office of Ocean and Coastal Resource Management  
NOAA Ocean Service, 1305 East West Highway  
Silver Spring MD 20910  
Phone: 301 713-3155  
<http://nerrs.noaa.gov>



Tour group at Tijuana Estuary



# Santa Lucia Conservancy

## Projects and Programs

The Santa Lucia Conservancy's mission is to conserve and sustain the Santa Lucia Preserve, a unique California Central Coast landscape, by implementing a model of compatible development and sustainable conservation where natural landscapes are protected and restored for Santa Lucia Preserve residents and all future generations. The Santa Lucia Preserve is located north of Big Sur, and south and east of the Carmel Valley.

Interpretive programs provide opportunities for residents and local youth and adult groups to explore the natural landscape and to learn about its unique resources. Cooperative programs with other conservation and research organizations, as well as scholastic institutions, provide opportunities for scientific study that are mutually beneficial.

Santa Lucia Conservancy's conservation programs are broadly defined by four categories: natural resource monitoring, natural resource management, habitat restoration, and scientific research. Each category encompasses tasks that are essential to accomplish its mission to conserve and sustain the Santa Lucia Preserve and to fulfill goals and objectives related to ensuring biological conservation and sustainability, based on sound science.

## Benefits to California State Parks

The Santa Lucia Conservancy owns and manages land adjacent to Garrapata State beach and Point Lobos State Reserve. The Conservancy shares natural resource management techniques and research results with State Park staff.

**When** Year-round

## Contact Information

James Sulentic, Executive Director  
Santa Lucia Conservancy  
26700 Rancho San Carlos Rd  
Carmel California 93923  
Phone: 831 626.8595  
Fax: 831 626.8522  
Email: [jsulentic@slconservancy.org](mailto:jsulentic@slconservancy.org)  
[www.slconservancy.org](http://www.slconservancy.org)



Photo: Santa Lucia Conservancy

# Southern California Wetlands Recovery Project

## Projects and Program

The Southern California Wetlands Recovery Project (SCWRP) is a broad-based partnership, chaired by the Resources Agency and supported by the State Coastal Conservancy that has public agencies, non-profits, scientists, and local communities working cooperatively to acquire and restore rivers, streams, and wetlands in coastal southern California. The SCWRP's geographic scope is from Point Conception in Santa Barbara County to the international border with Mexico. Using a non-regulatory approach and an ecosystem perspective, SCWRP partners work together to identify wetland acquisition and restoration priorities, prepare plans for priority sites, pool funds to undertake projects, implement priority plans, and oversee post-project maintenance and monitoring.

The goal of the Southern California Wetlands Recovery Project is to accelerate the pace, the extent, and the effectiveness of coastal wetland restoration through developing and implementing a regional prioritization plan for the acquisition, restoration, and enhancement of Southern California's coastal wetlands and watersheds.

## Benefits to California State Parks

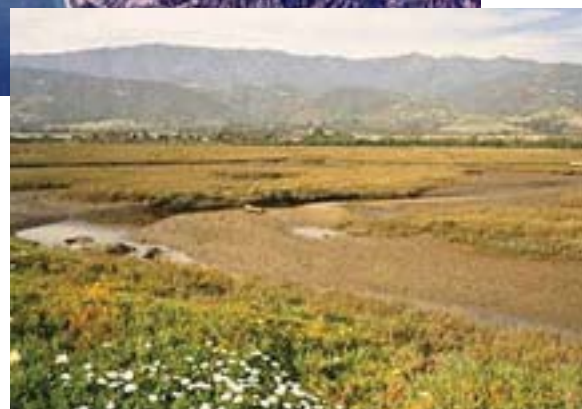
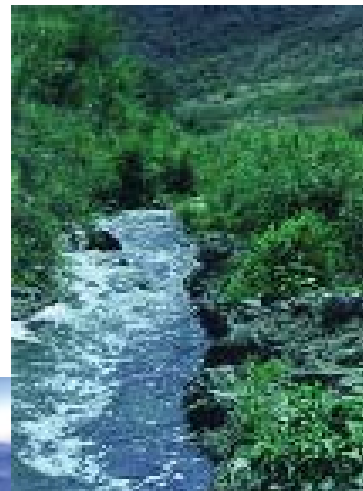
Cooperation with like-minded entities aids California State Parks in the preservation and restoration of wetland areas.

## When

Year-round

## Contact Information

Sam Schuchat, Executive Officer  
California Coastal Conservancy  
1330 Broadway, 11th Floor  
Oakland CA 94612  
Phone: 510 286-4181  
Fax: 510 286-0470  
[www.scwrp.org](http://www.scwrp.org)



Top to bottom:  
Arroyo Conejo at Hill Canyon-Calleguas  
Creek Watershed  
Ventura County Watershed  
Carpinteria Salt Marsh  
Photos: SCWRP

# The Dunes Collaborative

## Projects and Programs

The Dunes Collaborative partnership is collaboration between federal, state, private, and non-profit organizations committed to restoration of coastal dune habitats, recovery of threatened and endangered species, and the provision of quality visitor experiences of the unique and fragile ecosystem of Guadalupe-Nipomo Dunes. The partnership was established in 1998 and is funded by a \$9 million endowment.

## Benefits to California State Parks

The Dunes Collaborative works to identify restoration, recreation, and educational needs in the Guadalupe-Nipomo Dunes complex and to allocate funds to enhance these efforts. Identified priority projects include: controlling the spread of non-native invasive plant species; recovering rare plant populations; improving and protecting sensitive coastal habitats and listed species; and enhancing visitor experiences through education, interpretation and visitor services in the dunes. State Parks has benefited directly by being part of an interpretive master plan for the dunes, which include Pismo State Beach and all of Oceano Dunes State Vehicular Recreation Area. This master plan will greatly assist in educating the public about state parks within the dune complex, while protecting the resources and providing recreational opportunities. The plan provides oversight for 17,000 acres of coastal dunes by a very diverse management group, each member providing their own unique recreational, educational and interpretive opportunities for the public and retaining a consistent message of stewardship.

## When

Year-round

## Contact Information

Kathie Matsuyama, Chair  
Phone: 805 343-2455  
Email: [kmatsuyama@dunescenter.org](mailto:kmatsuyama@dunescenter.org)  
[www.dunescollaborative.org/](http://www.dunescollaborative.org/)



Guadalupe-Nipomo Dunes

# University of California and California State University

## Projects and Programs

The University of California and the California State University science programs conduct natural resource research projects, primarily related to wildlife habitat, each year in the State Park System. Año Nuevo Island Reserve, a University of California natural reserve located within Año Nuevo State Reserve, has been the site of northern elephant seal research since 1970.

## Benefits to California State Parks

An average of 100 research projects are in progress at state park units each year. Ninety percent of these projects are conducted by University of California and California State University graduate students, who share their research results with California State Parks. The department also co-hosts several symposiums each year with these students to showcase their projects. Recent symposium topics have included genetics, invertebrates and evolution.

**When** Year-round

## Contact Information

Dr. Alexander Glazer, Director  
University of California Natural Reserve System  
Office of Research - Division of Academic Affairs  
1111 Franklin Street  
Oakland CA 94607-5200  
Phone: 510 987-0143  
<http://nrs.ucop.edu/>



N A T U R A L  
R E S E R V E  
S Y S T E M  
UNIVERSITY OF CALIFORNIA

Please contact individual California State University Science Departments for information on their projects within CSP.



Northern Elephant Seals, Año Nuevo State Reserve





# Parkland Acquisition Partners

California State Parks welcomes the assistance of land conservation organizations to acquire and preserve new park lands. The following is a representative sampling of Parkland Acquisition Partners and is not purported to be a complete list.

• American Land Conservancy	81
• American River Conservancy	82
• Anza-Borrego Foundation and Institute	83
• Big Sur Land Trust	84
• Bolsa Chica Land Trust	85
• California Rangeland Trust	86
• Cayucos Land Conservancy	87
• Elkhorn Slough Foundation	88
• Foundation for Small Wilderness Area Preservation, Los Osos/ Morro Bay Chapter	89
• Hills for Everyone	90
• Lake County Land Trust	91
• Land Conservancy of San Luis Obispo County	92
• LandPaths	93
• Land Trust for Santa Barbara County	94
• The Land Trust of Napa County	95
• Mendocino Land Trust	96
• Middle Mountain Foundation	97
• Northcoast Regional Land Trust	98
• Packard Foundation	99
• Peninsula Open Space Trust	100
• Riverside Land Conservancy	101
• Sacramento Valley Conservancy	102
• Sanctuary Forest, Inc.	103
• Santa Monica Mountains Trails Council	104
• Save Mount Diablo	105

- Save the Redwoods League 106
- Sempervirens Fund 107
- Sequoia Challenge 108
- Small Wilderness Area Preservation, Inc. 109
- Sonoma Land Trust 110
- The Archaeological Conservancy 111
- The Nature Conservancy 112
- The Trust for Public Land 113
- Truckee Donner Land Trust 114
- Wildlands Conservancy 115
- Yucaipa Valley Conservancy 116

# American Land Conservancy

## Projects and Programs

Founded in 1990, the American Land Conservancy (ALC) is a private, non-profit land trust dedicated to conserving the landscapes that represent the very best of our ecological, scenic, recreational, cultural and agricultural resources. Through land acquisition, conservation easements and land exchanges, ALC has conserved 195,000 acres through 332 projects across the country. ALC values collaboration and works in partnership with willing private landowners, communities, public resource agencies, foundations, industry groups and non-profit organizations.

The mission of the American Land Conservancy is to conserve landscapes that represent the very best of our ecological, scenic, recreational, cultural, and agricultural resources.

## Benefits to California State Parks

American Land Conservancy assists State Parks with land acquisition statewide. They have been specifically involved in the acquisition of property for Topanga State Park and the Hearst Ranch property adjacent to San Simeon State Park.

**When** Year-round

## Contact Information

American Land  
Conservancy  
250 Montgomery Street  
Suite 210  
San Francisco CA 94104  
Phone: 415/ 912-3660  
Email: mail@alcnet.org  
www.alcnet.org



Hearst Ranch. Photo American Land Conservancy

# American River Conservancy

## Projects and Programs

The American River Conservancy conducts conservation, education, and stewardship programs to protect and enhance native fisheries, vanishing plant and animal communities, scenic vistas, cultural heritage and recreational lands within the American and Cosumnes River watersheds which lie in the foothills of the eastern Sacramento Valley.

## Benefits to California State Parks

American River Conservancy assists State Parks with land acquisition in the American River watershed. They have been specifically involved in the acquisition of property for Auburn State Recreation Area and Marshall Gold Discovery State Historic Park.

**When** Year-round

## Contact Information

Alan Ehrgott, Executive Director  
American River Conservancy  
348 Highway 49  
PO Box 562  
Coloma CA 94536  
Phone: 530 621-1224  
Fax: 530 621-4818  
Email: [ehrgott@arconservancy.org](mailto:ehrgott@arconservancy.org)



Auburn State Recreation Area



# Anza-Borrego Foundation and Institute

## Projects and Programs

The mission of the Anza-Borrego Foundation and Institute (ABF) is to promote conservation in Anza-Borrego Desert State Park® and the surrounding ecological region through land acquisition, education, interpretation and scientific studies. When it was formed in the early 1930s, the park was checker boarded by thousands of acres of inholdings—one estimate as high as 60,000 acres—nearly 10% of the current park!

As of 2004, the Anza-Borrego Foundation has deeded nearly 30,000 acres to the park . . . with 30,000 to go! Acquisitions have been in such critical areas as Palm Canyon, Coyote Canyon and the paleontologically rich Borrego Badlands.

The turn of the 21st century has presented ABF with unique opportunities to acquire major ranch lands that park planners long ago hoped would be part of Anza-Borrego Desert State Park®.

## Benefits to California State Parks

The Anza-Borrego Foundation and Institute assists State Parks with land acquisition in and around Anza-Borrego Desert State Park. The Foundation also supports an extensive environmental education and interpretation program.

**When** Year-round

## Contact Information

Anza-Borrego Foundation and Institute  
P.O. Box 2001  
Borrego Springs CA 92004  
Phone: 760 767-0446  
Fax: 760 767-0465  
Email: [info@theabf.org](mailto:info@theabf.org)  
[www.theabf.org](http://www.theabf.org)



Anza-Borrego Desert State Park



# Big Sur Land Trust

## Projects and Programs

The Big Sur Land Trust strategically and responsibly identifies and acquires valuable landscapes to protect them from the growing pressures of development as a legacy for future generations. The Big Sur Land Trust has been working to protect the incredible lands throughout California's central coast for more than a quarter of a century. Since its inception by a small group of concerned families, The Big Sur Land Trust has become a national leader in land conservation, forging partnerships with willing landowners to protect land from development at a time of unrivalled and unparalleled growth in California either through acquisition or the establishment of conservation easements. Creating an effective private sector alternative for land preservation, The Big Sur Land Trust also serves as a bridge between private and public sectors and has protected more than 30,000 acres of shoreline, wildlife habitat, streams, forests, grasslands and awe inspiring views.

## Benefits to California State Parks

The Big Sur Land Trust has been instrumental in such acquisitions as Point Lobos Ranch and additions to Monterey State Beach.

**When** Year-round

## Contact Information

The Big Sur Land Trust  
PO Box 221864  
Carmel CA 93922  
Phone: 831 625-5523  
Fax: 831 625-0716  
Email: [mail@bigsurlandtrust.org](mailto:mail@bigsurlandtrust.org)  
[www.bigsurlandtrust.org](http://www.bigsurlandtrust.org)

# Bolsa Chica Land Trust

## Projects and Programs

The purpose of the Bolsa Chica Land Trust is to acquire, restore and preserve the entire 1,700 acres of the mesa, lowlands and wetlands of the Bolsa Chica. The Land Trust conducts educational programs to build awareness about the role of the Bolsa Chica wetlands system in the natural and urban environment, and tell the story of its rich history. The Land Trust's Bolsa Chica Stewards have been working since 1996 on the mesa re-vegetation project. Over 2000 volunteers have spent thousands of hours replanting the mesa. More than 8,000 native plants have been planted at the Bolsa Chica Mesa. Over 15,000 volunteer hours have been logged. Volunteers of all ages are bringing the Mesa back to life.

In the future, an amazing urban park will speak to the generations. Well-marked nature trails, preserved archeological and historical sites, and the ever-changing interplay of flora and fauna will create a memorable experience. The preservation of the entire Bolsa Chica is necessary to maintain biodiversity and sensitive treatment of this coastal park environment.

Part of the preservation goal was achieved with the sale of 880 acres of wetlands to the State Lands Commission in 1997. However, without the preservation of the surrounding mesas, the entire wetlands system cannot function.

## Benefits to California State Parks

The Bolsa Chica Land Trust assists State Parks with land acquisition in the area of Bolsa Chica State Beach. They have been specifically involved in the acquisition of property for the Bolsa Chica Ecological Preserve, operated by the Department of Fish & Game, across the Pacific Coast Highway from Bolsa Chica SB.

**When** Year-round

## Contact Information

Marc Stirdivant, Executive Director  
The Bolsa Chica Land Trust  
5200 Warner Avenue #108  
Huntington Beach CA 92649  
Phone: 714 846-1001  
Email: [bclt@bolsachicalandtrust.org](mailto:bclt@bolsachicalandtrust.org)  
[www.bolsachicalandtrust.org](http://www.bolsachicalandtrust.org)



Bolsa Chica. Photo by Steven Eric Smith

# California Rangeland Trust

## Projects and Programs

The purpose of the California Rangeland Trust is to conserve the open space, natural habitat and stewardship provided by California's ranches. The Rangeland Trust is governed by ranchers - men and women who understand the importance and challenges of maintaining working landscapes. The Trust works closely with rangeland owners to protect and enhance the environmental and economic benefits that these working landscapes provide. In addition to drawing on the expertise of its Board of Directors, the Rangeland Trust has relationships with advisors from private industry, the University of California, government agencies, environmental organizations and other land trusts. Landowners have confidence that the Rangeland Trust understands their concerns and will work with them to effectively protect and improve the environmental quality of their ranches and the economic stability of their ranching operations.

## Benefits to California State Parks

The California Rangeland Trust assists State Parks with land acquisition statewide. They have been specifically involved in the acquisition of the Hearst Ranch property, adjacent to San Simeon State Park. The Rangeland Trust currently holds and monitors the conservation easement over the 80,000-acre Hearst Ranch surrounding Hearst Castle®.

**When** Opportunity driven

## Contact Information

Nita Vail, Executive Director  
California Rangeland trust  
1221 H Street  
Sacramento CA 95814-1910  
Phone: 916-444-2096  
Fax: 916-444-2194  
Email: [nvail@rangelandtrust.org](mailto:nvail@rangelandtrust.org)  
Website: [www.rangelandtrust.org](http://www.rangelandtrust.org)





# Cayucos Land Conservancy

## Projects and Programs

The Cayucos Land Conservancy was formed in March 1999 for the purpose of establishing a permanent greenbelt around Cayucos in San Luis Obispo County. In order to create this scenic resource, the Cayucos Land Conservancy (CLC) set goals to protect the Estero Bluffs Property, the hillsides behind Cayucos and the coastal terrace.

## Benefits to California State Parks

The Cayucos Land Conservancy has been granted a perpetual conservation easement over the Estero Bluffs, which stretch nearly four miles north, from Cayucos to Villa Creek, while California State Parks holds fee ownership to the property. As a result of the conservation easement, CLC participates in management decisions effecting Estero Bluffs and cooperates with State Parks in protecting its recreational and natural resources. CLC's goal is to ensure that the community's vision to keep the land "as is" will be honored in perpetuity.

## When

Opportunity driven

## Contact Information

Greg Bettencourt, President  
Cayucos Land Conservancy  
P.O. Box 336  
Cayucos CA 93430  
Phone: 805 995-1675  
Fax: 805 995-1675  
Email: [gmbett@charter.net](mailto:gmbett@charter.net)  
[www.thecayucoslandconservancy.org](http://www.thecayucoslandconservancy.org)

# Elkhorn Slough Foundation

## Projects and Programs

The Elkhorn Slough Foundation is a nonprofit, member-supported organization working to conserve and restore Elkhorn Slough and its watershed in Monterey County. The Foundation works with local, state, and national constituencies to protect natural heritage. As California's coastal wetlands continue to disappear, the preservation of the Central Coast's premier estuary becomes ever more critical.

## Benefits to California State Parks

The Elkhorn Slough Foundation assists State Parks with land acquisition in the Monterey Bay area. They have been specifically involved in the acquisition of property for Salinas River and Moss Landing State Beaches.

## When

Year-round

## Contact Information

Elkhorn Slough Foundation  
Box 267  
Moss Landing CA 95039  
Phone: 831 728-5939 or 831 728-2822  
Fax: 831 728-1056  
Email: [info@elkhornslough.org](mailto:info@elkhornslough.org)  
[www.elkhornslough.org](http://www.elkhornslough.org)



Photos: Elkhorn Slough Foundation

# Foundation for Small Wilderness Area Preservation, Los Osos/Morro Bay Chapter Projects and Programs

The Foundation for Small Wilderness Area Preservation (SWAP) is a 501(c)(3) nonprofit corporation founded in 1971 by Emily Polk, Ansel Adams, Margaret Owings and Edgar Wayburn. Its purpose then, as now, is to provide a mechanism by which people can preserve vitally important natural areas of undeveloped land or small wilderness areas through land acquisition. The Los Osos/Morro Bay Chapter of Small Wilderness Area Preservation was organized in 1985 for the specific purpose of purchasing and preserving a threatened area of Los Osos known as the Elfin Forest.

## Benefits to California State Parks

The first parcel of land in San Luis Obispo County saved by SWAP was the Los Osos Oaks State Reserve purchased by California State Parks in 1971 through the efforts of Emily Polk. The Baptista Ranch on Turri Road and the Griffith Property across Los Osos Creek from the Baptista Ranch were also acquired through the efforts of the Estero Chapter of SWAP (forerunner of the current Los Osos/Morro Bay Chapter) during the 1970s, and turned over to California State Parks. In 1987, legislation authored by Assemblyman Eric Seastrand provided funding to purchase 51.2 acres of the Elfin Forest as an addition to Morro Bay State Park. SWAP continues its stewardship of the Elfin Forest with liaison with California State Parks and an "Adopt a Park" agreement with San Luis Obispo County Parks that provides for maintenance and control of erosion and native plant restoration.

**When** Opportunity driven

## Contact Information

Ron Rasmussen, Chair  
Los Osos Morro Bay Chapter  
Small Wilderness Area Preservation  
P.O. Box 6442  
Los Osos CA 93412  
Phone: 805 528-0392  
Email: rerasmus@earthlink.net

# Hills for Everyone

## Projects and Programs

Hills for Everyone works to protect, preserve and restore the environmental resources and natural environs of the Puente-Chino Hills and surrounding areas for the enjoyment of current and succeeding generations and to initiate, sponsor, promote, organize and carry out plans, programs, and activities that will further these ends.

Regional efforts to save the Puente-Chino Hills have been underway for many years. Conservationists have been remarkably successful. Currently, Hills For Everyone is heavily engaged in the protection of the “Missing Middle” of an important wildlife corridor. Tonner Canyon and the hills between Harbor Boulevard in La Habra Heights and the 57 Freeway in Brea are threatened by major development projects. If these lands are developed, wildlife in the western part of the hills will become isolated and die out. Protection of the “Missing Middle” is essential to the health of the entire Corridor and the livability of the communities in this region.

## Benefits to California State Parks

Hills for Everyone was instrumental in the founding of Chino Hills State Park, helping set aside 14,000 acres. In the western part of the Puente-Chino Hills Corridor, nearly 4,000 acres have been purchased as open space. The entire hillside system is now connected to the Cleveland National Forest at Coal Canyon, the first acquisition in state park history that was made for its connectivity value.

**When** Year-round

## Contact Information

Claire Schlotterbeck, Executive Director  
Hills For Everyone  
P.O. Box 9835  
Brea CA 92822-1835  
Email: [info@HillsForEveryone.org](mailto:info@HillsForEveryone.org)



Chino Hills State Park

# Lake County Land Trust

## Projects and Programs

The goal of the Lake County Land Trust is to preserve land permanently and when possible provide public access for aesthetic and recreational uses. The trust can hold Conservation Easements which are a creative way to preserve land in perpetuity while still maintaining private ownership.

The Lake County Land Trust was formed to protect and preserve wetlands, wildlife habitats, forests, watersheds, riparian stream corridors, lakeside areas, and other properties with unique scenic, cultural, agricultural, educational, or historical value in Lake County, California. The trust works only with willing sellers and has no power of eminent domain. The trust works cooperatively with landowners, private groups and governmental agencies. Funding for land acquisition comes from State and Federal sources as well as private corporations and donations. The Lake County Land Trust is a sponsor member of the Land Trust Alliance and the California Council of Land Trusts.



## Benefits to California State Parks

The Lake County Land Trust assists State Parks with land acquisition in Lake County. They have been specifically involved in the acquisition of property for Clear Lake State Park and Anderson Marsh State Historic Park.

**When** Opportunity driven



## Contact Information

Lake County Land Trust  
PO Box 711  
Lower Lake CA 95457  
Phone: 707 995-1398  
E-mail: [susanne@jps.net](mailto:susanne@jps.net)  
[www.lakecountylandtrust.org](http://www.lakecountylandtrust.org)

# Land Conservancy of San Luis Obispo County

## Projects and Programs

The Land Conservancy of San Luis Obispo County is a local land trust working in San Luis Obispo County, California. The Conservancy's purpose is to protect land having scenic, agricultural, habitat and cultural values. They do this through land acquisition, conservation easements, and resource restoration.

The Land Conservancy was created in 1984. Since formation, they have permanently protected over 8,500 acres of land in San Luis Obispo County. The Land Conservancy focuses on protecting Monterey Pine Forests in Cambria, coastal streams and drainages in San Luis Obispo and Nipomo, oak woodlands countywide, and wetlands in Black Lake Canyon. Their activities also include conservation planning, natural resource restoration, and community outreach. The Conservancy is governed by a Board of Trustees representing various communities within the County and has a dedicated professional staff.

## Benefits to California State Parks

The Land Conservancy of San Luis Obispo County assists State Parks with land acquisition in San Luis Obispo County. They have been specifically involved in the acquisition of property for Morro Bay and Montana de Oro State Parks.

**When** Opportunity driven

## Contact Information

Brian B. Stark, Executive Director  
Land Conservancy of San Luis Obispo County  
P.O. Box 12206  
San Luis Obispo CA 93406  
Phone: 805 544-9096  
Fax: 805 544-5122  
Email: [lc@special-places.org](mailto:lc@special-places.org)  
[www.special-places.org](http://www.special-places.org)



# LandPaths

## Projects and Programs

LandPaths, or Land Partners Through Stewardship, is dedicated to fostering a love of the land in Sonoma County, creating ways for people to experience the beauty, understand the value, and steward the land in their local communities.



LandPaths outings create opportunities for a diversity of residents to visit open spaces, farms and parks-in-development throughout Sonoma County. Regular stewardship projects range from creek clean ups & non-native species removal to trail building and ranch road improvements. LandPaths education programs provide the chance for over 400 students each year, from 2nd through 11th grade, to experience the benefits of field based learning.

## Benefits to California State Parks

LandPaths is proud to assist State Parks with park acquisition, public access, planning and management in Sonoma County. LandPaths has assisted with the McCormick addition to Sugarloaf Ridge State Park, and additions to Jack London State Historic Park. Most recently, LandPaths has been working with State Parks on the 3,373-acre Willow Creek acquisition to be added to Sonoma Coast State Beach. Through a four-year Coastal Conservancy grant, LandPaths has been providing assistance with public access and land management. This assistance has allowed State Parks to acquire the property and allow safe public access while protecting resources.

LandPaths provides an in-person, park orientation to all users of this new park property, and has developed and implemented a volunteer Trail Watch and a Road & Trail Crew, providing an opportunity to educate park users and to get them involved in stewardship.



Willow Creek Acquisition. Photo: LandPaths

**When** Year-round

## Contact Information

Craig Anderson, Executive Director  
Jonathan Glass, Project Manager  
LandPaths  
P.O. Box 4648  
Santa Rosa CA 95402  
Phone: 707 544-7284  
Fax: 707 544-7242  
E-mail: [info@landpaths.org](mailto:info@landpaths.org)  
[www.landpaths.org](http://www.landpaths.org)

# Land Trust for Santa Barbara County

## Projects and Programs

The Land Trust for Santa Barbara County protects valuable wildlife habitat, scenic ranch and farm land and community open space through voluntary conservation agreements with private landowners and public partners. Since 1985, the Land Trust has conserved over 18,500 acres of natural and agricultural land through conservation easements and fee acquisitions, including the Sedgwick Reserve that is in the University of California Natural Reserve System. The Land Trust has a successful record of riparian and wetland restoration and management projects, including two that are restoring access to streams for the endangered Southern steelhead populations that breed on the county coast.

## Benefits to California State Parks

Land Trust conservation easements protect watersheds, wildlife habitat and scenic views around El Capitan State Park, Refugio State Beach and Gaviota State Park. State Park visitors can enjoy the Arroyo Hondo Preserve near Gaviota, and the Carpinteria Bluffs and Carpinteria Salt Marsh, both within walking distance of Carpinteria State Beach.

**When** Year-round

## Contact Information

Michael Feeney, Executive Director  
Land Trust for Santa Barbara County  
P.O. Box 91830  
Santa Barbara CA 93190  
Phone: 805 966-4520  
Fax: 805 963-5988  
Email: [info@sblandtrust.org](mailto:info@sblandtrust.org)  
[www.sblandtrust.org](http://www.sblandtrust.org)





# The Land Trust of Napa County

## Projects and Programs

The Land Trust of Napa County works to protect the natural diversity, scenic open space and agricultural vitality of Napa County by preserving lands with significant conservation values for present and future generations and by fostering an appreciation and understanding of the natural environment.

The Land Trust actively

- Identifies and permanently protects significant lands in Napa County by acquiring fee title, by accepting conservation easements, and by assisting in the transfer of lands to local, state, or federal agencies for protection.
- Manages permanent preserves and monitors and enforces conservation easement restrictions to protect conservation values and to provide the public with an outstanding example of enlightened land stewardship.
- Provides educational and research opportunities to foster appreciation and understanding of the natural environment and the conservation of natural resources.

## Benefits to California State Parks

The Land Trust of Napa County assists State Parks with land acquisition in Napa County. They have worked with CSP for over 30 years and via 7 transactions have protected 2,413 acres at Bothe-Napa Valley and Robert Louis Stevenson State Parks.

**When** Opportunity driven

## Contact Information

John Hoffnagle, Executive Director  
The Land Trust of Napa County  
1040 Main St, Suite 203  
Napa CA 94559  
Phone: 707 252-3270  
Fax: 707 252-1071  
Email: [john@napalandtrust.org](mailto:john@napalandtrust.org)  
[www.napalandtrust.org](http://www.napalandtrust.org)



Bothe-Napa Valley State Park

# Mendocino Land Trust

## Projects and Programs

The Mendocino Land Trust has been working in the public interest since 1976 to conserve, in perpetuity, over 9,300 acres of significant lands throughout Mendocino County. The purpose of the Mendocino Land Trust is to conserve important natural resources of Mendocino County, including wildlife habitat, open space, scenic vistas, working farmlands and forests, watersheds, and to facilitate public access.

The Trust's conservation approach includes working with private landowners, governmental agencies, and community groups to establish ecoregional priorities and strategies as the basis for conservation action. Strategies and services include conservation planning, land conservation (fee acquisition as well as purchased and donated conservation easements) and volunteer stewardship.

## Benefits to California State Parks

The Mendocino Land Trust works in partnership with the California State Parks to provide for the permanent protection of the estuarine, wetlands, wildlife, and associated later-seral stage forest characteristics of the Big River property, adjacent to Mendocino Headlands State Park. They have also been involved with the acquisition of land for Caspar Headlands State Park.

**When** Opportunity driven

## Contact Information

James R. Bernard, Executive Director  
Mendocino Land Trust  
P.O. Box 1094  
Mendocino California 95460  
Phone: 707 962-0470  
Fax: 707 962-0444  
Email: [jbernard@mendocinolandtrust.org](mailto:jbernard@mendocinolandtrust.org)  
[www.mendocinolandtrust.org](http://www.mendocinolandtrust.org)

# Middle Mountain Foundation

## Projects and Programs

The Middle Mountain Foundation (MMF), a 501 (c) (3) nonprofit organization, was formed in 1989 as an outgrowth of the Sutter Buttes Naturalists. The specific purposes of the foundation are to “educate the general public in the relevance and importance to society of natural and cultural resources and to encourage preservation, understanding, and good stewardship of such resources.”

Through contractual agreements with landowners, MMF has created learning opportunities within the Sutter Buttes for thousands of people, typically as guided hikes for the public or as school class outings. Carefully controlled access allows visitors to have high quality experiences while protecting the land itself. MMF board members also engage in outreach, spreading the message of this special place to those who have not yet visited the interior of the range.

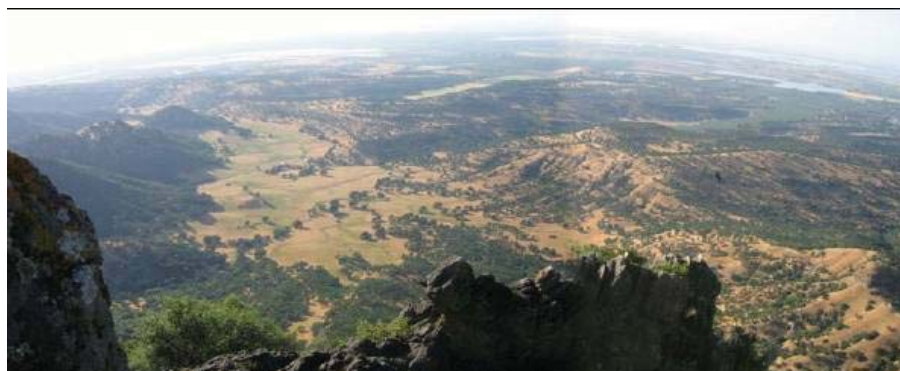
## Benefits to California State Parks

MMF currently works collaboratively with numerous entities, including local (Colusa, Yuba and Sutter Counties), state (State Parks and Fish and Game), regional (e.g., Great Valley Center), and National Land Trusts (e.g., Land Trust Alliance, Nature Conservancy) to preserve the land within the Sutter Buttes.

**When** Opportunity driven

## Contact Information

Michael Darnell, Executive Director  
Middle Mountain Foundation  
PO Box 3359  
Yuba City CA 95992-3359  
Phone: 530 671-6116  
Email: [middlemountain@yahoo.com](mailto:middlemountain@yahoo.com)



Interior area of Sutter Buttes. Photo: Michael Darnell, Middle Mountain Foundation

# Northcoast Regional Land Trust

## Projects and Programs

The Northcoast Regional Land Trust (NRLT) is a regional organization with a large, tri-county area of interest - Humboldt, Del Norte and Trinity Counties - which together make up nearly five million acres of land. Of these three counties a respective 50%, 75%, and 90% of the resource land bases are publicly owned. The NRLT is dedicated to the protection of working farms, forests, and grazing lands, and to the preservation and protection of land for its natural, educational, scenic and historic values. The organization works with landowners on a voluntary basis to promote stewardship of Northern California's healthy and productive resource base, natural systems and quality of life.

Since incorporation in 2000, NRLT has protected 320 acres of salmon-spawning tributaries in the Mattole River watershed; acquired a 54 acre property that will reestablish natural tidal action that expands, enhances, and restores estuary and brackish marsh habitat for a variety of fish and wildlife species, including threatened and endangered salmonids; is actively working on five conservation projects that would preserve biological, cultural and agricultural resources on 1,000 acres in several watersheds throughout Humboldt County; has established conservation easements on more than 6,000 acres of working ranches; and is currently assisting private ranchland owners in placing conservation easements on over 19,000 more acres throughout the north coast.

## Benefits to California State Parks

The Northcoast Regional Land Trust has been instrumental in the acquisition of Vista Ridge Grove, Vista Ridge and Virgin Grove, land intended for Sinkyone Wilderness State Park.

**When** Opportunity driven

## Contact Information

Jim Petruzzi, Executive Director  
Northcoast Regional Land Trust  
PO Box 398  
Bayside California 95524  
Phone: 707 822-2242  
Fax: 707 822-5210  
Email: [j.petruzzi@ncrlt.org](mailto:j.petruzzi@ncrlt.org)  
[www.ncrlt.org](http://www.ncrlt.org)



Baker Creek. Photo: Northcoast Regional Land Trust

# The Packard Foundation

## Projects and Programs

The David and Lucile Packard Foundation was created in 1964 by David Packard (1912-1996), the co-founder of the Hewlett-Packard Company, and his wife, Lucile Salter Packard (1914-1987).

The Packard Foundation invests in innovative people and organizations to improve the lives of children, enable creative pursuit of science, advance reproductive health, and conserve and restore earth's natural systems.

The Foundation focuses the majority of its grant making in three program areas:

- Conservation and Science Program: seeks to protect and restore our oceans, coasts, and atmosphere and to enable the creative pursuit of scientific research toward this goal.
- Population Program: seeks to slow the rate of growth of the world's population, to expand reproductive health options among the world's poor, and to support reproductive rights.
- Children, Families and Communities Program: seeks to ensure opportunities for all children to reach their potential.

## Benefits to California State Parks

The Packard Foundation has assisted State Parks with land acquisition in the Central Coast area of California. They have been specifically involved in the acquisition of the Coast Dairies property near Santa Cruz and Wilder Ranch State Historic Park.

**When** Opportunity driven

## Contact Information

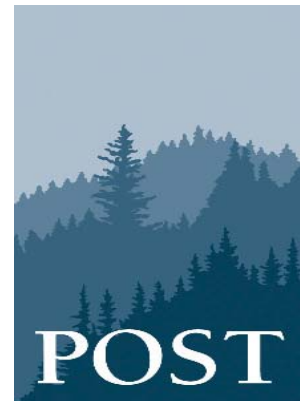
The David and Lucile Packard Foundation  
300 Second St  
Los Altos California 94022  
Phone: 650 948-7658  
Email: [inquiries@packard.org](mailto:inquiries@packard.org)  
[www.packard.org](http://www.packard.org)

# Peninsula Open Space Trust

## Projects and Programs

The purpose of the Peninsula Open Space Trust (POST) is to give permanent protection to the beauty, character and diversity of the San Francisco Peninsula landscape for people here now and for future generations. POST encourages the use of these lands for natural resource protection, wildlife habitat, low-intensity public recreation and agriculture.

Since its founding in 1977, POST has helped to give permanent protection to more than 55,000 acres of land in San Mateo and Santa Clara counties. The land protected by POST reflects the Peninsula's rich natural diversity and the immeasurable contribution wild and scenic open spaces make to our quality of life. POST's most recent campaign, *Saving the Endangered Coast*, raised \$200 million and has protected more than 14,000 acres of precious coastal open space as of October 2006.



## Benefits to California State Parks

POST has worked with State Parks to acquire property for Butano State Park and San Gregorio State Beach. In February 2005, POST transferred Whaler's Cove, a property adjacent to Pigeon Point Lighthouse, and sixty-one acres of the Bolsa Point property to California State Parks.

**When** Opportunity driven

## Contact Information

Audrey C. Rust, President  
Peninsula Open Space Trust  
3000 Sand Hill Road, Bldg. 1,  
Suite 155  
Menlo Park CA 94025  
Phone: 650 854-7696  
Fax: 650 854-7703  
[post@openspacetrust.org](mailto:post@openspacetrust.org)



Whaler's Cove © Paolo Vescia 2006, Courtesy of POST

# Riverside Land Conservancy

## Projects and Programs

The Riverside Land Conservancy was founded in 1988 in response to the critical need for a local community organization dedicated to the conservation of open space and natural areas. Since its beginnings, primary emphasis for its activities has been placed on lands that link ecological preserves, parks and other wildlife refuges, conserve riparian habitats, or protect significant agricultural resources in Riverside County. Over time, the Conservancy has also become involved in conservation in other inland southern California counties.

Over the past few years, RLC has leveraged \$34 worth of land for every dollar spent, resulting in the acquisition of over 10,000 acres of land for preservation. As a non-profit land trust that works with landowners who would like to see their lands preserved, RLC helps to ensure that natural lands, wildlife habitat and working farm lands are preserved for future generations.

## Benefits to California State Parks

The Riverside Land Conservancy assists California State Parks with land acquisition in Riverside County. The Conservancy was instrumental in the acquisition of the San Timoteo Canyon Property .

**When** Opportunity driven

## Contact Information

Pete Dangermond, Executive Director  
Riverside Land Conservancy  
4075 Mission Inn Avenue  
Riverside CA 92501  
Phone: 951 788-0670  
Fax: 951 788-0679  
Email: [rlc0670@sbcglobal.net](mailto:rlc0670@sbcglobal.net)



San Timoteo Canyon Property

# Sacramento Valley Conservancy

## Projects and Programs

The Sacramento Valley Conservancy (SVC) is a private, non-profit land trust. Its purpose is to preserve the beauty, character and diversity of the Sacramento Valley landscape by working with citizens, property owners, developers, public agencies and other nonprofit organizations. It creates dedicated open space by the acceptance of gifts, private purchase from willing sellers, facilitation of public acquisition, conservation easements and by cooperative efforts. SVC then arranges for the preservation of these lands for agricultural, natural resource protection, recreation, and wildlife habitat purposes.



**sacramento valley  
conservancy**

*Open Space. For all of us.*

## Benefits to California State Parks

In 2003, the Off Highway Motor Vehicle Recreation Division of CSP entered into a partnership with the Sacramento Valley Conservancy to acquire and manage buffer lands associated with Prairie City State Vehicular Recreation Area. Today, the Conservancy works with the Division on planning and acquisition projects, and provides support in negotiations with nearby property owners, as well as planning issues with local agencies.

## When

Opportunity-driven

## Contact Information

Aimee Rutledge, Executive Director  
Sacramento Valley Conservancy  
PO Box 163351  
Sacramento CA 95816  
Phone: 916 492-0908  
Fax: 916 448-4120  
Email: [Bond13mac@aol.com](mailto:Bond13mac@aol.com)  
[www.sacramentovalleyconservancy.org](http://www.sacramentovalleyconservancy.org)



Deer Creek Hills. Photo: Sacramento Valley Conservancy

*California State Parks Partners*



# Sanctuary Forest, Inc.

## Projects and Programs

Sanctuary Forest, Inc. is a non-profit land trust located within the temperate rainforest of the headwaters of the Mattole River on California's northern coast. Sanctuary Forest provides permanent protection for ecologically sensitive lands, enriching the positive relationship between these lands and our communities. Our conservation efforts include the protection of old growth Douglas fir, ancient redwood groves, wildlife corridors, other precious habitat and healthy streamflows in the Mattole watershed and surrounding regions

The Upper Mattole River and Forest Cooperative is a collaborative entity of public, private, federal, state and non-profit organizations working together to manage over 4,000 acres of the Mattole headwaters as an old growth forest and endangered salmon refuge. These partners include such public partners as the Bureau of Land Management, California Department of Fish & Game, California Coastal Conservancy, California Department of Forestry and Fire Protection, and the California Wildlife Conservation Board

## Benefits to California State Parks

Sanctuary Forest, Inc. assisted in the acquisition of property now part of the Sinkyone Wilderness State Park.

**When** Opportunity driven

## Contact Information

Eric Goldsmith, Executive Director  
Sanctuary Forest, Inc.  
P.O. Box 166  
Whitethorn CA 95589  
Phone: 707 986-1087  
Fax: 707 986-1607  
Email: [eric@sanctuaryforest.org](mailto:eric@sanctuaryforest.org)

# Santa Monica Mountains Trails Council

## Projects and Programs

The Santa Monica Mountains Trails Council coordinates with various government agencies in efforts toward development and preservation of the trail system; assists in negotiations with property owners regarding specific trail alignments; promotes public awareness; and builds, monitors and maintains trails. The Santa Monica Mountains Trails Council works to protect and enhance the trail system that serves as a recreational, educational and historical resource for generations to enjoy.

## Benefits to California State Parks

Trails Council volunteers maintain trails on the state and federal lands in the Santa Monica Mountains. They have a volunteer crew working on a trail somewhere in the mountains every Saturday of the year, except in July and August. Over 115 volunteers and agency personnel worked to build and restore trails in Pt. Mugu State Park during the 25th annual Santa Monica Mountains Trail Days in April 2006.

**When** Year-round

## Contact Information

Ruth Gerson, President  
Santa Monica Mountains Trails Council  
P.O. Box 345  
Agoura Hills CA 91376  
Phone: 818 222-4531  
Email: [mail@smmtc.org](mailto:mail@smmtc.org)  
[www.smmtc.org](http://www.smmtc.org)



Photos: Santa Monica Mountains Trails Council

# Save Mount Diablo

## Projects and Programs

Save Mount Diablo is a San Francisco Bay Area citizens non-profit 501(c)3 organization that works to preserve Mount Diablo's peaks and surrounding foothills, through land acquisition and preservation strategies to: protect the mountain's natural beauty, integrity, and biological diversity; enhance our area's quality of life; and provide recreational opportunities consistent with protection of natural resources.

## Benefits to California State Parks

Save Mount Diablo has been instrumental in increasing open space on and around the mountain from 6,788 acres to more than 89,000 acres. The organization works in partnership with Mt. Diablo State Park, East Bay Regional Park District, and other public and private entities to increase and manage natural lands and to identify mitigation opportunities. They have also been involved in the acquisition of the John Marsh Home and Cowell Ranch properties.

**When** Year-round

## Contact Information

Ron Brown, Executive Director  
Save Mount Diablo  
1901 Olympic Blvd., Suite 220  
Walnut Creek CA 94596  
Phone 925 947-3535  
Fax 925 947-0642  
Email: [smdinfo@savemountdiablo.org](mailto:smdinfo@savemountdiablo.org)



John Marsh Home. Photo: Friends of John Marsh



Cowell Ranch. Photo: (c) Richard Rollins

# Save-the-Redwoods League

## Projects and Programs

Since its formation in 1918, the Save-the-Redwoods League has assisted in the purchase of more than 6 of every 10 acres of protected redwoods in California's State Parks. The League has helped preserve 165,000 acres of ancient redwoods. The League is the only organization focused on conservation of the redwood forest throughout its natural range. Their primary conservation tool is acquisition of forestland at fair-market value from willing sellers. Purchases are based on professional appraisals. The League also funds restoration, supports research to expand knowledge of redwood forest dynamics, and educates the public about redwoods and the redwood forest ecosystem.



Armstrong Redwoods SR

## Benefits to California State Parks

The Save-the-Redwoods League was instrumental in the creation of the State Park System in the 1920s and is responsible for the addition of thousands of acres of irreplaceable natural resources to the System. The League has a world-recognized reputation for foresight and preservation.



### When

Year-round

### Contact Information

Save-the-Redwoods League  
114 Sansome St, Room 1200  
San Francisco CA 94104-3823  
Phone: 415 362-2352  
Fax: 415 362-7017  
[www.savetheredwoods.org](http://www.savetheredwoods.org)

# Sempervirens Fund

## Projects and Programs

The purpose of Sempervirens Fund is to preserve and protect the natural character of California's Santa Cruz Mountains and to encourage appropriate public enjoyment of this environment.

## Benefits to California State Parks

Sempervirens Fund provides assistance with acquisition of property adjacent to and within Portola Redwoods SP, Castle Rock SP, Butano SP, and Big Basin Redwoods SP. Most recently, they have participated in the acquisition of Panorama Ridge at Castle Rock SP. The Sempervirens Fund has saved over 21,000 acres of redwood forest in the Santa Cruz Mountains.

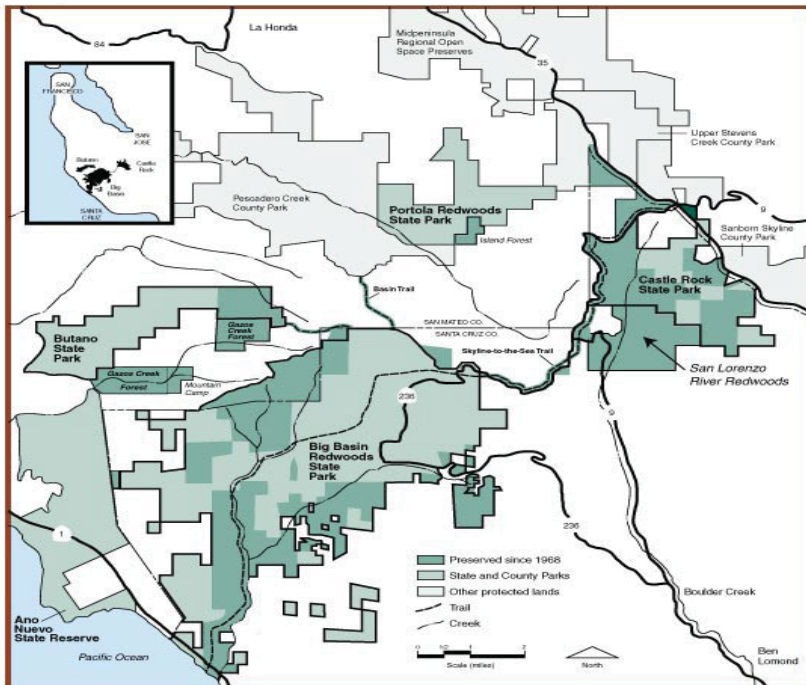


Lompico Headwaters.  
Photo: © 2006 Frank Balthis

## When

Opportunity-driven

### Sempervirens Fund - Land Saved since 1900



## Contact Information

Brian Steen, Executive Director  
Sempervirens Fund  
PO Drawer BE  
Los Altos CA 94023-4054  
Phone: 650 968-4509  
Fax: 650 968-0713  
[www.sempervirens.org](http://www.sempervirens.org)

# Sequoya Challenge

## Projects and Programs

Sequoya Challenge works to protect the land and provide educational experiences. Their primary project is to provide wilderness access to the handicapped, particularly along the South Yuba Independence Trail in Nevada County.

## Benefits to California State Parks

Sequoya Challenge maintains the South Yuba Independence Trail at South Yuba River State Park and provides guided walks for the public along the trail. The group has also been involved in acquisition of property for South Yuba River State Park.

**When** Opportunity driven

## Contact Information

Sequoya Challenge  
PO Box 3166  
Grass Valley CA 95945-3166  
Phone: (530) 477-4788  
Fax: (530) 271-0706  
Email: l\_chaplin@hotmail.com  
www.sequoyachallenge.com



South Yuba River and Trail



# Sonoma County Agricultural Preservation and Open Space District

## Projects and Programs

The Sonoma County Agricultural Preservation and Open Space District protects farm and rangeland, greenbelts between cities, wildlife habitat and land for public recreation in Sonoma County. The voters of Sonoma County created the District in 1990 and its funding comes from a quarter cent sales tax, also approved by the voters. The County Board of Supervisors serves as its Board of Directors. It has protected almost 70,000 acres and has added thousands of acres to local, regional and State Parks throughout the County. By will of the voters, the District can only work with willing landowners.

## Benefits to California State Parks

The Sonoma County Agricultural Preservation and Open Space District and State Parks have been successful partners in several transactions that have resulted in additions to Austin Creek State Park, Sugarloaf Ridge State Park, Sonoma Coast State Beach, Jack London State Historic Park and Annadel State Park. The District was the negotiating partner and primary funding source on these acquisitions. It continues to hold other potential State Park additions, pending further negotiations.

**When** Opportunity driven

## Contact Information

Andrea Mackenzie, General Manager  
Sonoma County Agricultural Preservation and Open Space District  
747 Mendocino Ave Ste 100  
Santa Rosa CA 95401  
Phone: 707 565-7360  
Fax: 707 565-7359  
Email: [openspace@sonoma-county.org](mailto:openspace@sonoma-county.org)  
[www.sonomaopenspace.org](http://www.sonomaopenspace.org)



**S O N O M A C O U N T Y**  
**AGRICULTURAL PRESERVATION  
AND OPEN SPACE DISTRICT**



Red Hill area, Sonoma Coast SB. Photo: Sonoma County Agricultural Preservation and Open Space District

# Sonoma Land Trust

## Projects and Programs

Sonoma Land Trust is a local, non-governmental, non-profit organization funded largely by membership contributions. The Land Trust works closely with private land-owners, the Sonoma County Agricultural Preservation and Open Space District and other public agencies at all levels of government, nonprofit partners, and foundations. Sonoma Land Trust is a member of the California Council of Land Trusts and subscribes to the Standards and Practices of the national Land Trust Alliance.

Since 1976, Sonoma Land Trust has protected more than 17,000 acres of beautiful, productive and environmentally significant land in and around Sonoma County.

## Benefits to California State Parks

The Sonoma Land Trust helped preserve and acquire the Willow Creek property, recently added to Sonoma Coast State Beach; and has assisted in the acquisition of property for Salt Point State Park.

**When** Opportunity driven

## Contact Information

Ralph Benson, Executive Director  
Sonoma Land Trust  
966 Sonoma Ave  
Santa Rosa CA 95404  
Phone: 707 526-6930  
Email: [ralph@sonomalandtrust.org](mailto:ralph@sonomalandtrust.org)  
[www.sonomalandtrust.org](http://www.sonomalandtrust.org)



# The Archaeological Conservancy

## Projects and Programs

The Archaeological Conservancy, established in 1980, is the only national non-profit organization dedicated to acquiring and preserving the best of our nation's remaining archaeological sites. The Conservancy protects these sites by acquiring the land on which they rest, preserving them for posterity. Based in Albuquerque, New Mexico, the Conservancy also operates regional offices in Mississippi, Maryland, Ohio, and California.

## Benefits to California State Parks

The Archaeological Conservancy assists with acquisition planning and acquires archaeological sites. It then sells these sites to state parks departments or holds them in preserve status.

## When

Opportunity driven



## Contact Information

The Archaeological Conservancy

The Archaeological Conservancy  
5301 Central Ave NE, Ste 902  
Albuquerque NM 87108  
Phone: 505 266-1540  
[www.archaeologicalconservancy.com](http://www.archaeologicalconservancy.com)



Indian Rock Shelter, Colorado Desert District

# The Nature Conservancy

## Projects and Programs

The Nature Conservancy is an international nonprofit membership organization, whose mission is to preserve plants, animals and natural communities by protecting the lands and waters they need to survive. Using a strategic, science-based planning process called Conservation by Design, the Conservancy and its more than one million members have safeguarded over 117 million acres of land and 5,000 miles of river around the world. In California, The Nature Conservancy has preserved more than 1.2 million acres of land and water, and helped to protect 3.8 million acres of the state's coastal marine areas. The Conservancy works with California State Parks and a variety of state and federal government agencies, such as the U.S. Department of the Interior, the Department of Defense and the U.S. Fish and Wildlife Service, as well as agencies at the state and local level.

## Benefits to California State Parks

The Nature Conservancy has the flexibility and the resources to acquire land when opportunities arise. With their assistance, the Department has acquired property in many areas of the state. The Nature Conservancy also works with elected officials on the state budget and statewide bond measures to ensure that CSP has an ongoing source of funding to achieve it's mission.

## When

Year-round

## Contact Information

Liz O'Donoghue, Dir. External Affairs  
The Nature Conservancy  
California Program  
201 Mission St, 4th Flr  
San Francisco CA 94105-1832  
Phone: 415 777-0487  
Fax: 415 777-0244  
Email: [calweb@tnc.org](mailto:calweb@tnc.org)  
[www.nature.org/california](http://www.nature.org/california)



Photo: The Nature Conservancy

# The Trust for Public Land

## Projects and Programs

The Trust for Public Land (TPL) is a national, nonprofit, land conservation organization that conserves land for people to enjoy as parks, community gardens, historic sites, rural lands, and other natural places, ensuring livable communities for generations to come. TPL helps structure, negotiate, and complete land transactions that create parks and protected natural areas.

THE  
TRUST  
for  
PUBLIC  
LAND



CALIFORNIA

## Benefits to California State Parks

TPL has been instrumental in preservation of land for many California State Parks, including Rio de Los Angeles State Park, a State Recreation Area (Cornfields); Cowell Ranch in Contra Costa County; Piedras Blancas Beach near Hearst Castle®; and the Coast Dairies property in Santa Cruz County.

## When

Year-round

## Contact Information

Reed Holderman, California Executive Director

Western Regional Office  
116 New Montgomery St, 3rd Flr  
San Francisco CA 94105  
Phone: 415 495-5660  
Fax: 415 495-0541  
[www.tpl.org](http://www.tpl.org)



Coast Dairies. Photo: © Sam Roberts



Cornfields overview. Photo: © Rich Reid/Colors of Nature

# Truckee Donner Land Trust

## Projects and Programs

The Truckee Donner Land Trust is a 501(c)(3) nonprofit organization that works to preserve and protect important historic, recreational and scenic open spaces in the greater Truckee region. The Trust works with landowners, federal, state and local governments, and the public-at-large, to create win-win situations for private and public interests. They negotiate easements, land exchanges and land acquisitions.

## Benefits to California State Parks

The Truckee Donner Land Trust - in partnership with the Trust for Public Land (TPL) — has acquired over 2,100 acres of private land adjacent to the Donner Memorial State Park, the Schallenberger Ridge property. The Truckee Donner Land Trust and TPL are currently completing conveyance of property ownership to the State Park to triple the size of the park. The Land Trust and TPL raised almost \$4 million from the public and private sectors for this project.

## When

Opportunity driven

## Contact Information

Perry Norris, Executive Director  
Truckee Donner Land Trust  
10069 W. River Street  
Truckee CA 96161  
Phone: 530 582-4711  
[www.tdlandtrust.org](http://www.tdlandtrust.org)

# Wildlands Conservancy

## Projects and Programs

The Wildlands Conservancy (TWC) is a California nonprofit public benefit corporation founded in 1995. TWC has conveyed more lands in California to National Parks and Federal Wilderness Areas than has any other conservation organization. TWC's purpose is to preserve the beauty and biodiversity of the earth, and to fund programs so that every child may know the wonder and joy of nature.

## Benefits to California State Parks

The Wildlands Conservancy identified, lobbied for and secured funding to acquire an important wildlife corridor connecting Chino Hills State Park and the Cleveland National Forest. Further, The Wildlands Endowment Fund has donated funds for the Chino Hills State Park Visitor Center which will showcase urban wildlife corridors.

**When** Opportunity driven

## Contact Information

David Myers, Executive Director  
The Wildlands Conservancy  
39611 Oak Glen Road, #12  
Oak Glen CA 92399  
Phone: 909 797-8507  
Email: [paula@wildlandsconservancy.org](mailto:paula@wildlandsconservancy.org)  
[www.wildlandsconservancy.org](http://www.wildlandsconservancy.org)



Wildlife Corridor, Coal Canyon. Photo: The Wildlands Conservancy

# Yucaipa Valley Conservancy

## Projects and Programs

The Yucaipa Conservancy has been involved in a very exciting and successful project - the creation of a State Park in an area known as Wildwood Canyon in San Bernardino County. The primary area for acquisition is 3,500 acres, and includes an abundance of wildlife, historic and archaeological sites, beautiful canopied oak forests, and an extensive system of riding and hiking trails.

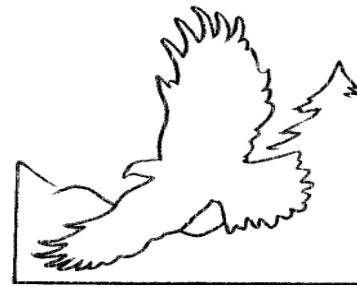
## Benefits to California State Parks

The Conservancy is working with California State Parks to secure additional acreage for the Wildwood Canyon Project

**When** Opportunity driven

## Contact Information

Frank Sissons, Chairman of the Board  
Yucaipa Valley Conservancy  
P.O. Box 102  
Yucaipa CA 92399  
Phone: 909 790-2226  
[www.conservancy.homestead.com](http://www.conservancy.homestead.com)



Entrance to Wildwood Canyon. Photo: Yucaipa Valley Conservancy

# Service Partners

Service partners aid the Department by supplying visitor services that cannot readily be provided by Department personnel. The following is a representative sampling of Service Partners and is not purported to be a complete list.

- California Parks Hospitality Association 118
- California Service Corps 119
- California Shock/Trauma Air Rescue 120
- Off-Highway Motor Vehicle Service Partners 121
- Specialized Park Operating Agreements 123
- Tierra Del Sol Four Wheel Drive Club of San Diego 124
- Ventura County Search and Rescue 125
- Volunteers in Parks Program 126

# California Parks Hospitality Association

## Projects and Programs

The California Parks Hospitality Association (CPHA) represents active state park concession operators. It presents an annual symposium and educational activities for members, monitors legislation related to concessions and maintains connections for members with CSP staff.

## Benefits to California State Parks

CPHA disseminates state park information to its members

## When

Year-round

## Contact Information

Jack Harrison, Executive Director  
California Parks Hospitality Association  
1127 Eleventh St, Ste 820  
Sacramento CA 95814  
Phone: 916 492-1160  
Fax: 916 446-6095  
[www.cphassn.org](http://www.cphassn.org)



Prairie City SVRA



Columbia SHP





# California Service Corps

## Projects and Programs

The California Service Corps (CSC) is charged with increasing the number of Californians involved with service and volunteerism throughout the state. The California Service Corps administers programs such as AmeriCorps and Citizen Corps, guides policy development to support the non-profit and service fields, and is responsible for the coordination of CaliforniaVolunteers.org, a statewide network that matches Californians to volunteer opportunities in their communities. Through these programs and initiatives, Californians of all ages and abilities are provided with ongoing opportunities to volunteer, to become better prepared to respond to emergencies and disasters, and ultimately, to embrace a lifetime ethic of service.

## Benefits to California State Parks



Partnership with the California Service Corps enables California State Parks to post volunteer openings statewide, thereby reaching a larger audience than otherwise possible. State Parks also participates in the CSC-hosted “Volunteer Village” at the Governor and First Lady’s Conference on Women & Families. This event allows CSP to promote volunteer opportunities in state parks to an audience of approximately 11,000 women from throughout California.

## When

Year-round

## Contact Information

Kaira Esgate, Director of Communications & Outreach  
California Service Corps  
1110 K St, Ste 210  
Sacramento CA 95814  
Phone: 916 323-7646 or 888 567-SERV  
Fax: 916 323-3227  
[www.californiavolunteers.org](http://www.californiavolunteers.org)



CSP booth at the Governor and First Lady’s Conference on Women & Families. Photo: California Service Corps

# California Shock/Trauma Air Rescue

## Projects and Programs

California Shock/Trauma Air Rescue (CALSTAR) is a stand alone 501(c)(3) nonprofit organization founded in June 1983. CALSTAR provides an air ambulance, transporting critically ill and injured patients, regardless of their ability to pay, anywhere within the State of California on a 24-hour basis. They transport patients from the incident scene or from community medical facilities to specialized treatment centers for definitive care, specializing in air transport of pediatric patients.

## Benefits to California State Parks

CALSTAR has co-sponsored an annual fundraiser with the Hollister Hills SVRA Volunteer Motorcycle Safety Patrol since 1994. All proceeds from the event benefit medical care for needy children.

## When

Event specific

## Contact Information

CALSTAR  
4933 Bailey Loop  
McClellan CA 95652  
Phone: 916 921-4000  
Fax: 916 921-4099  
Email: [info@calstar.org](mailto:info@calstar.org)  
[www.calstar.org](http://www.calstar.org)



Photo: CALSTAR



Photo: CALSTAR

# Off-Highway Motor Vehicle Service Partners

## Projects and Programs

Several off-highway motor vehicle groups assist the department by providing event support, volunteer labor to construct and manage facilities, and park clean-up and maintenance. These partners include:

State Vehicular Recreation Area	Service Partner	Service Provided
Carnegie SVRA	Red Neck Roosters M/C Club	Volunteer labor for sound testing, event support, park clean-up and maintenance
Hollister Hills SVRA	Esprit de Four	Volunteer labor, training, and park clean-up
	Forty-Plus Vintage Motorcycle	Volunteer labor for construction and maintenance
	Ghostriders Motorcycle Club	Event support, park clean-up, and maintenance
	Mountain Transit Authority	Volunteer labor for construction and maintenance
Hungry Valley SVRA	Mountain Arts and Recreation Coalition	Re-cycling program
	Over the Hill Gang Racing Club	Encourages and promotes safe motorcross events for all ages and skill levels
Oceano Dunes SVRA	Friends of Oceano Dunes	Event support, park clean-up and maintenance, equipment donation
Prairie City SVRA	Capitol City Mountain Goat 4-wheel Drive Club	Volunteer labor for 4-wheel drive safety
	Dirt Diggers North Motorcycle Club	Annual Hangtown Motorcross Race
	Polka Dots M/C Club	Event support, park clean-up and maintenance



Hangtown Motorcross Race, Prairie City SVRA

## Benefits to California State Parks

These partners contribute services to the State Vehicular Recreation Areas that the department would not be able to provide.

## When

Year-round

## Contact Information

Contact the park units listed on the table on the previous page for additional information.



# Specialized Park Operating Agreements

## Projects and Programs

California State Parks has unique agreements with public and non-profit entities to operate specialized park units, including:

Park Unit	Operating Entity	Service Provided
Cuyamaca Rancho SP and Palomar Mountain SRA	County of San Diego	Outdoor educational programs
Drum Barracks	City of Los Angeles	Civil War Barracks and Museum operations and interpretation
El Presidio de Santa Barbara SHP	Santa Barbara Trust for Historic Preservation	Acquisitions, operations and interpretation
Marconi Conference Center SHP	Marconi Center Operating Corporation	Conference center operations
Mount San Jacinto SP	Mt. San Jacinto Winter Park Authority	Tram operations
Watts Towers of Simon Rodia SHP	City of Los Angeles	Park operations and interpretation

## Benefits to California State Parks

These operating agreements provide specialized services that the department is not able to provide.

### When

Year-round

### Contact Information

Contact the park units listed above for additional information.



Photos, top to bottom:  
Watts Towers of Simon Rodia SHP  
Mount San Jacinto SP  
Marconi Conference Center SHP

# Tierra Del Sol Four Wheel Drive Club of San Diego

## Projects and Programs

The Tierra Del Sol Four Wheel Drive Club of San Diego promotes four-wheel drive recreation on public lands, in a manner that is safe and fun for the entire family. They are committed to recreation practices that protect the natural environment.

## Benefits to California State Parks

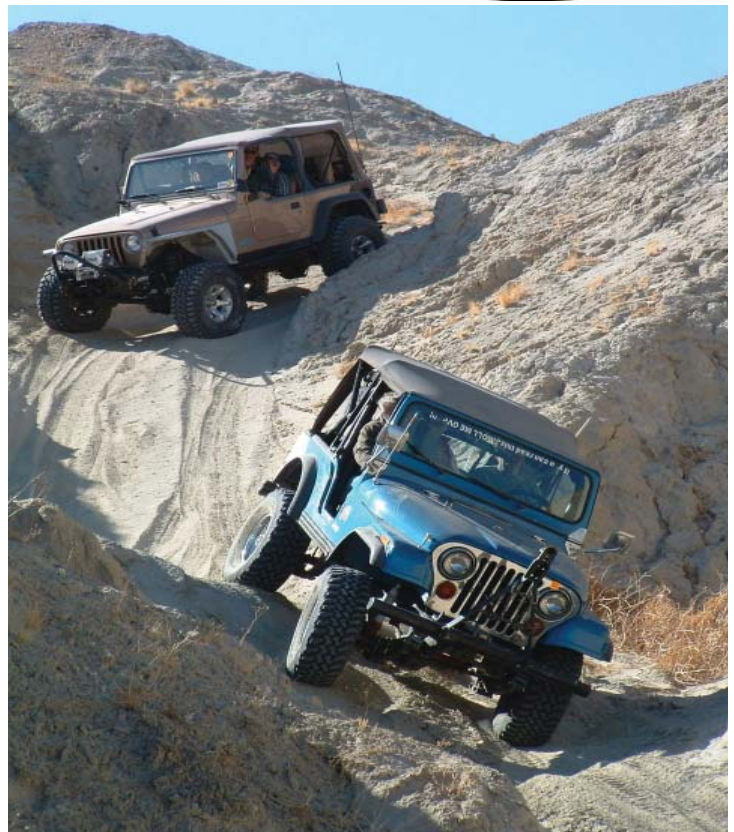
Tierra Del Sol Four Wheel Drive Club members have been actively involved with the Truckhaven project near Ocotillo Wells SVRA for the past four years.

## When

Year-round

## Contact Information

Sam Merten, President  
Tierra Del Sol Four Wheel Drive Club of San Diego  
PO BOX 4371  
San Diego CA 92164  
Email: [president@tds4x4.com](mailto:president@tds4x4.com)  
[tds4x4.com](http://tds4x4.com)



Truckhaven Area, Ocotillo Wells SVRA. Photo: CORVA

# Ventura County Search and Rescue

## Projects and Programs

Ventura County Search and Rescue is comprised of highly dedicated and skilled volunteers who train with Hungry Valley State Vehicular Recreation Area (SVRA) staff on-site at the park. They are extensively trained in search techniques, technical rope rescue, tracking, swift water rescue, communications, winter operations, urban search and rescue, and search management.

## Benefits to California State Parks

Ventura County Search and Rescue provides emergency assistance for search and rescue needs at Hungry Valley SVRA.

## When

As needed

## Contact Information

Sgt. David Kenny  
Ventura County Sheriff Search and Rescue Coordinator  
Special Services Division  
Aviation/Search & Rescue Unit  
Camarillo CA 93010  
Phone: 805 383-4733  
[www.vcsar.org](http://www.vcsar.org)



Photo: Ventura County Sheriff Search and Rescue

# Volunteers in Parks Program

## Projects and Programs

Volunteers are playing an ever-increasing role in California's parks. Volunteers serve in almost all of California's state park units and lend invaluable assistance in one or more of the following program areas:

- Interpretation for visitors: docents, education programs for school groups, tours, nature hikes, train rides, living history programs and demonstrations
- Public contact: visitor center volunteers, public safety, horseback, mountain bike, foot, boat, and off-highway vehicle patrols
- Park operations: campground and park hosts, park equipment maintenance, and park administration
- Natural resource management: trail construction and maintenance, native plant enhancement, exotic plant removal, habitat restoration, and beach cleanup
- Cultural resource management: caring for collections, and historical research

## Benefits to California State Parks

Volunteers are an integral part of State Park operations. In 2005 16,609 volunteers—an all-time high—contributed 950,430 hours of service, representing an equivalent dollar value to the department of over \$17 million.

## When

Year-round

## Contact Information

Margo Cowan, Volunteer Coordinator  
California State Parks  
PO Box 942896  
Sacramento CA  
94296-0001  
Phone: 916 653-9069  
Fax: 916 654-9048  
Email: [vipp@parks.ca.gov](mailto:vipp@parks.ca.gov)  
[www.parks.ca.gov/volunteers](http://www.parks.ca.gov/volunteers)



**Volunteers in California State Parks**

**Become a Volunteer Today!**

California State Parks offers an astonishing array of opportunities for volunteers. Each park is unique with specific needs. Trail construction, exotic plant removal, nature walks, children's programs, living history, museum work, historic gardening, graphic design, administration, fund-raising, special events, camp hosting, and safety patrols are among the possibilities. You'll make new friends, give to your community, and have fun!

[www.parks.ca.gov](http://www.parks.ca.gov) (916) 653-9069

© 2003 California State Parks

The banner features three small images at the top: a woman and a child looking at a map, a woman kayaking on a lake, and a group of people working on a wooden structure. Below the main text, there is an image of a woman talking on a phone and a cake that says "Thank You Volunteers".



# Outdoor Recreation Partners

Outdoor recreation partners work with the Department to both introduce non-traditional users to the outdoors, and to assist recreation enthusiasts in the enjoyment of California State Parks. The following is a representative sampling of Outdoor Recreation Partners and is not purported to be a complete list.

• American Motorcyclist Association	128
• American Sand Association	129
• Badlands Off-Road Adventures	130
• Blue Ribbon Coalition	131
• California Association of 4 Wheel Drive Clubs Inc.	132
• California Nevada Snowmobile Association	133
• California Off-Road Vehicle Association	134
• California Police Activities League/State Park Police Activities League/ Off-Road Police Activities League	135
• California Trail Users Coalition/Grapevine Adventure Association	136
• Health and Wellness Program	137
• National Off-Highway Vehicle Conservation Council	138
• Off-Road Business Association	139
• Pacific Forest and Watershed Lands Stewardship Council	140
• Pacific Leadership Institute	141
• San Diego Off-Road Coalition	142

# American Motorcyclist Association

## Projects and Programs

Founded in 1924, the American Motorcyclist Association (AMA) has an unparalleled history of pursuing, protecting and promoting the interests of the world's largest and most dedicated group of motorcycle enthusiasts. The AMA focuses on rights, riding and racing by sanctioning off-road and on-road riding activities, through its government relations work, and overseeing professional and amateur racing events.

## Benefits to California State Parks

American Motorcyclist Association Districts 36, 37 and 38 work in partnership with the Off Highway Motor Vehicle Recreation (OHMVR) Division. The AMA Districts support the OHMVR Division in advocating for the reduction of noise in an effort to keep more riding opportunities open. Several AMA sanctioned races are conducted at SVRAs each year, including the Hangtown National Professional Motocross at Prairie City SVRA which completed its 38th annual event in 2006, hosting over 30,000 spectators.

## When

Year-round

## Contact Information

American Motorcyclist Association  
13515 Yarmouth Dr  
Pickerington OH 43147  
Phone: 800 AMA-JOIN  
Fax: 614/856-1920  
[www.amadirectlink.com](http://www.amadirectlink.com)



rights. riding. racing.

American **Motorcyclist** Association



# American Sand Association



## Projects and Programs

The American Sand Association (ASA) is a non profit organization managed and promoted by volunteers. The ASA supports national cooperation of local and regional sand sport organizations and shares with them ideas and information to help them unite, inform and mobilize. Through the use of volunteers, ASA members promote responsible resource management for all Californians.

## Benefits to California State Parks

ASA assists the Off Highway Motor Vehicle Recreation Division with distribution of Safety Education brochures through DMV mailings. The association provides a valuable cadre of experienced OHV volunteers to staff the all-terrain vehicle sand course at the annual Beach Play Day Event at Huntington Beach.

## When

Year-round



Photo:ASA

## Contact Information

Bob Mason, Chair  
The American Sand Association  
1911 Foothill Blvd PMB 108  
La Verne CA 91750  
Phone: 714 229-0286  
Email: [rwmskm@cox.net](mailto:rwmskm@cox.net)  
[www.americansandassociation.org](http://www.americansandassociation.org)

# Badlands Off-Road Adventures, Inc.

## Projects and Programs

Badlands Off-Road Adventures, Inc. specializes in providing new and inexperienced SUV and 4-Wheel Drive vehicle owners with the information and expertise required to negotiate their vehicle off-road safely and confidently.

## Benefits to California State Parks

Badlands Off-Road Adventures provides effective off-highway 4-wheel training which will benefit the parks by reducing the number of incidents when unskilled drivers get into trouble and require park resources to resolve problems. Students gain respect for the environment and their training will reduce potential for property damage and personal injury.

### When

Year-round

### Contact Information

Tom Severin, President  
Badlands Off-Road Adventures,  
Inc.  
PO Box 961  
Redondo Beach CA 90277  
Phone: 310 374-8047  
Fax: 909 752-9041  
Email: Tom@4x4training.com  
www.4x4training.com



Photos: Badlands Off-Road Adventures, Inc.

# Blue Ribbon Coalition

## Projects and Programs

The Blue Ribbon Coalition is a national recreation group that champions responsible use of public and private lands, and encourages individual environmental stewardship. It is made up of trail motorists, ATVers, 4X4 enthusiasts, snowmobilers, equestrians, and sportsman and represents over 10,000 individual members and 1,200 organization and business members.

## Benefits to California State Parks

The Blue Ribbon Coalition works with park staff at the statewide and local level, and is actively involved in land-use planning.

## When

Year-round

## Contact Information

Blue Ribbon Coalition  
4555 Burley Drive, Ste A  
Pocatello ID 83202-1921  
Phone: 208 237-1008  
Fax: 208 237-9424



Photo: Blue Ribbon Coalition

Don Amador, BRC Western  
Representative  
Phone: 925 625-6287  
Fax: 925 625-5309  
Email: [brdon@sharetrails.org](mailto:brdon@sharetrails.org)

# California Association of 4 Wheel Drive Clubs, Inc.

## Projects and Programs

Since 1959 the non-profit California Association of 4 Wheel Drive Clubs (Cal 4WD) has actively promoted the advancement of vehicle oriented outdoor recreation. Today, the Association represents over 8,000 members and 160 member clubs. They are the largest organization of this type in the State and represent owners of all makes and models of 4WD vehicles, as well as non-owners who support responsible vehicle oriented recreation. The organization has won "Take Pride in California" awards, and "Volunteers for Public Lands" national awards.



## Benefits to California State Parks

CAL 4WD staff and volunteers work closely with legislators and land use managers to provide input, influence, expertise, and manpower to keep lands open to 4WD vehicle access. Members are active in conservation projects throughout the State, and many local clubs participate in the "Adopt-A-Trails" program.

## When

Year-round

## Contact Information

Robert Reed, President  
California Association of 4  
Wheel Drive Clubs, Inc.  
8120 36th Ave  
Sacramento CA 95824-2304  
Phone: 800 4X4-FUNN (494-  
3866) or 916 381-8300  
Fax: 916 381-8726



Fun Run to Bodie SHP.  
Photo: CAL 4WD



# California Nevada Snowmobile Association

## Projects and Programs

The California Nevada Snowmobile Association is a non-profit charitable organization dedicated to the sport of snowmobiling. The Association supports charity, scholarships, and safety educational programs.

## Benefits to California State Parks

The Snowmobile Association's safety and education program provides safety classes and produces safety materials to promote the sport of snowmobiling.

## When

Seasonal

## Contact Information

Fred Wiley, President  
California Nevada Snowmobile Association  
3907 Foxwood  
Bakersfield CA 93306  
Phone: 661 871-1411  
Email: [fmwiley@aol.com](mailto:fmwiley@aol.com)  
[www.cnsa.net](http://www.cnsa.net)



# California Off-Road Vehicle Association

The California Off-Road Vehicle Association (CORVA) is a varied group of outdoor recreationists who are extremely active in promoting the positive aspects of vehicular access on public lands. CORVA's main objective is to work with land managers to promote responsible off-highway vehicular access and recreation opportunities. Secondly, they educate their membership on rules and regulations, and promote clean-up and trail maintenance projects.

## Benefits to California State Parks

CORVA provides a valuable resource to land managers in the form of dedicated OHV enthusiasts who believe in responsible vehicular access. They also participate in clean-up and trail maintenance projects.

## When

Year-round



Photo: CORVA

## Contact Information

Ed Waldheim, President  
California Off-Road Vehicle  
Association  
1500 West El Camino Ave #352  
Sacramento CA 95833-1945  
Phone: 800 42-CORVA, ext. 215  
Email: [ed@corva.org](mailto:ed@corva.org)  
[www.corva.org](http://www.corva.org)



Truckhaven Area, Octotillo Wells SVRA. Photo: CORVA



# California Police Activities League, State Park Police Activities League, and Off-Road Police Activities League

## Projects and Programs

The California Police Activities League (PAL) is a 501(c)(3) nonprofit organization founded over 35 years ago by a group of police officers. California PAL sponsors many different types of boys and girls youth sporting events, and other enriching youth activities that are positive, wholesome and character building in well supervised and safe settings. California PAL events are held at various locations throughout the state giving youth the opportunity to visit new places and broaden their horizons. The State Parks PAL and Off-Road PAL organizations are affiliated with California PAL.



Beach Play Day

## Benefits to California State Parks

California PAL provides funding and volunteer manpower support to State Park community events, such as Beach Play Day, Northern and Southern California Camporee, and FamCamp®. State Parks in turn provides locations for the PAL Kayak program and the Off-Road PAL program.

## When

Year-round

## Contact Information

Gregg Wilson, Executive Director  
California Police Activities League  
2000 E 14th St  
San Leandro CA 94577  
Phone: 510 544-4300 or 800 622-5725  
Fax: 510 544-4350  
[www.calpal.org](http://www.calpal.org)



Beach Play Day



# California Trail Users Coalition / Grapevine Adventure Association



## Projects and Programs

The California Trail Users Coalition (CTUC) promotes diversity of recreational uses on public land. It is a non-profit association that also assists public agencies with development and maintenance of facilities. Members are people with an interest in multiple use trails for everyone's benefit

The Grapevine Adventure Association is a non-profit corporation affiliated with the California Trail Users Coalition. The Association is committed to the success of public lands as it works to fulfill its mission of caring for the land and serving people. The association compliments and adds to the skills and resources of the government agencies managing public lands, involving other partners, and fostering citizen involvement in public land planning and decision making.

The Grapevine Adventure Association is a non-profit corporation affiliated with the California

## Benefits to California State Parks

CTUC assists California State Parks and other public agencies with development and maintenance of trail facilities.

## When

Year-round

## Contact Information

Ed Waldheim, President  
California Trail Users Coalition  
3550 Foothill Blvd  
Glendale CA 91214  
Email: [ed@corva.org](mailto:ed@corva.org)  
[www.trailusers.org](http://www.trailusers.org)



Photos: CTUC

# Health and Wellness Program

## Projects and Programs

California State Park's Health and Wellness Program consists of several programs and events, including:

- Camp Kaiser - a day camp at Folsom Lake State Recreation Area for children with Type 2 Diabetes
- Childhood Obesity Conference - State Parks partners with the Department of Health Services, Department of Education, and the Center for Weight and Health of UC Berkeley to present this biennial conference of health care professionals. The department provides information on the many state park units and programs available as venues for healthy recreation activities.
- Take A Hike! - a program endorsed by the Governor's Council on Physical Fitness and Sports, Take A Hike!-City Walks encourages Californians, especially state and local agency employees, to participate in City Walks within their own communities as well as hikes on the many trails in California State Parks. Communities that are partnering with City Walks include San Diego County and Los Angeles County.
- Healthy Foods Initiative - a program managed by State Parks' Concessions Division to bring healthy food choices to park visitors.

## Benefits to California State Parks

The Health and Wellness Program encourages people to utilize California State Parks for an exciting and affordable way to improve health, control weight, and enjoy the magnificent beauty of California with family and friends.

## When

Year-round

## Contact Information

Sedrick Mitchell, Deputy  
Director  
External Affairs  
California State Parks  
PO Box 942896  
Sacramento CA 94296-0001  
Phone: 916 653-8380  
[www.parks.ca.gov/takeahike](http://www.parks.ca.gov/takeahike)



Mt. Tamalpais SP

# National Off-Highway Vehicle Conservation Council

## Projects and Programs

The National Off-Highway Vehicle Conservation Council (NOHVCC) is a national organization comprised of recreation enthusiasts who develop and provide a wide spectrum of programs, materials, information and tools to individuals, clubs, associations and agencies to further responsible OHV recreation. The NOHVCC conducts Recreation Management Workshops designed to bring together decision makers, resource specialists, recreation planners, and OHV enthusiasts in order to create a better understanding of OHV public needs and desires; to examine environmental issues surrounding OHV activity; to promote more effective ways to manage OHV recreation; and to enhance the planning, design, and maintenance of quality OHV trails, trail systems, and areas.

## Benefits to California State Parks

The NOHVCC offers consultations on youth programs and special riding events, and shows interested groups how to conduct fundraising activities.

## When

Year-round



## Contact Information

Jim Pilon  
11756 Vanport Ave  
Lake View Terrace CA 91342  
Phone: 818 890-2209  
Email: [tourntrail@aol.com](mailto:tourntrail@aol.com)  
[www.nohvcc.org](http://www.nohvcc.org)

# Off-Road Business Association

## Projects and Programs

The Off-Road Business Association (ORBA) is a trade association composed of off-road related businesses united to promote common goals that support the prosperity and growth of the off-road industry. Although ORBA is a non-profit corporation, its officers and directors make decisions and take actions based on keeping off-road related businesses operating and profitable. Off-road volunteer organizations that are working at the grass-roots level on specific land use issues can appeal to ORBA for financial and political support.

## Benefits to California State Parks

ORBA provides information on current off-highway vehicle recreation trends and works with staff to inform the OHV community and businesses on changing policies on OHV recreation.

## When

Year-round



## Contact Information

Meg Grossglass  
Off-Road Business Association  
1701 Westwind Drive #216  
Bakersfield CA 93301  
Phone: 951 926-1953  
Email: meg@orba.biz  
www.orba.biz

# Pacific Forest and Watershed Lands Stewardship Council

## Projects & Programs

The Stewardship Council exists to protect and enhance the beneficial values and uses of the watershed lands of California. They strive for and nurture productive relationships with a diversity of communities and stakeholders and build alliances and encourage partnerships with people and organizations across the California landscape.

## Benefits to California State Parks

The Stewardship Council works with park staff at Carnegie SVRA to help identify, preserve, and interpret cultural sites. Additionally, members volunteer to patrol sensitive areas of the park, providing additional resource protection assistance throughout the year.

## When

Year-round

## Contact Information

Pacific Forest and Watershed Lands Stewardship Council  
303 Vintage Park Drive, Suite 150  
Foster City CA 94404  
(650) 286-5150 or (866) 791-5150  
[www.stewardshipcouncil.org](http://www.stewardshipcouncil.org)



# Pacific Leadership Institute



## Projects and Programs

The Pacific Leadership Institute (PLI) is an umbrella organization for five community programs promoting learn-by-doing experiences using challenge, the outdoors, and play as teaching tools for self-esteem, team-work, leadership, and life skills. PLI is a special project of San Francisco State University's Recreation and Leisure Studies Department, administered as a not-for-profit affiliate of the University. PLI serves over 10,000 participants annually in its programs, including youth development programs, schools and after-school programs, community-based organizations, non-profits, private and corporate groups. PLI collaborates with the California State Parks Office of Community Involvement to offer the State Parks FamCamp® trainings and programs connecting non-traditional users with state parks to host facilitated family/group camping trips. FamCamp® provides camp sites and gear for families and groups to enjoy the thrill of camping in state parks.

## Benefits to California State Parks

PLI introduces non-traditional users to the outdoors and to California State Parks. The PLI also provides leadership for the overall FamCamp® program offering guidance for educating users, and potential users, who have less exposure and experience to outdoor areas and parks.



## When

Year-round

## Contact Information

Drew Mc Adams, Program Director  
Pacific Leadership Institute  
Department of Recreation and Leisure Studies  
San Francisco State University  
1600 Holloway Ave, HSS 307  
San Francisco CA 94132  
Phone: 415 405-3737  
Fax: 415 338-0543  
Email: [info@pliprograms.org](mailto:info@pliprograms.org)

*California State Parks Partners*



All photos: PLI



# San Diego Off-Road Coalition

## Projects and Programs

San Diego Off-Road Coalition (SDORC) is a non-profit organization dedicated to promoting off-roading as a safe, healthy, family activity while promoting and preserving the natural environment. SDORC works with other associations, governmental organizations, and interested individuals to bring about a safe and responsible off-roading experience. SDORC currently works with local community planning groups, county and state officials, and other OHV organizations to create new OHV trails and recreation areas in the county.

## Benefits to California State Parks

SDORC volunteers have contributed countless hours in the 15 years they have worked with Ocotillo Wells SVRA.

## When

Year-round

## Contact Information

Ed Stovin, President  
San Diego Off-Road Coalition  
PO Box 710206  
Santee CA 92072-0706  
Phone: 858 560-6642  
Fax: 619 639-0332  
Email: [info@sdorc.org](mailto:info@sdorc.org)  
[www.sdorc.org](http://www.sdorc.org)



Oceano Dunes SVRA



# Professional Organizations

California State Parks is an active member of professional organizations composed of other recreation providers. Membership in these organizations provides the Department with opportunities to develop cooperative programs and projects. The following is a representative sampling of Professional Organizations and is not purported to be a complete list.

- California Association of Regional Park and Open Space Administrators 144
- California Park and Recreation Society 145
- California Roundtable on Recreation, Parks and Tourism 146
- California State Park Rangers Association 147

# California Association of Regional Park and Open Space Administrators



## Projects and Programs

The California Association of Regional Park and Open Space Administrators (CARPOSA) participates in the formation, review and adoption of state and federal legislation, offering assistance, recommendations and comments to local, state and federal officials on pertinent issues. CARPOSA also presents growth and educational opportunities for professional staff members at different levels in all agencies' organizations, as well as organizing dynamic and interesting conferences for members.

## Benefits to California State Parks

State Park staff attends and presents at CARPOSA conferences. Participation in these events and others encourages networking between agencies to promote professional development.

## When

Year-round

## Contact Information

Jim O'Connor, CARPOSA  
Secretary  
Santa Clara County Parks  
298 Garden Hill Dr  
Los Gatos CA 95062  
Phone: 408 355-2226  
Email: [Jim.oconnor@prk.scc-gov.org](mailto:Jim.oconnor@prk.scc-gov.org)  
[www.carposa.org](http://www.carposa.org)



# California Park and Recreation Society

## Projects and Programs

The California Park and Recreation Society (CPRS) was established in 1945 to provide park, recreation, leisure and community service professionals, educators and interested citizens with the knowledge and resources to enhance their leadership in creating community through people, parks and programs. It is the largest state park and recreation professional organization in the country. It has members in 85% of the 535 park and recreation agencies in the state. CPRS hosts an annual regional conference of 5 western states; produces a quarterly magazine and a bi-monthly newsletter; creates and organizes technical assistance resources and materials; provides trends information; and monitors state and federal legislation important to parks and recreation.



## Benefits to California State Parks

The California Park and Recreation Society serves as the unifying voice for all park and recreation providers in the state. CPRS promotes state park information and provides a vehicle to communicate to local park and recreation providers.

## When

Year-round



## Contact Information

Jane Adams, Executive Director  
California Park and Recreation Society  
7971 Freeport Blvd  
Sacramento CA 95832  
Phone: 916 665-2777  
[www.cprs.org](http://www.cprs.org)

# California Roundtable on Recreation, Parks and Tourism

## Projects and Programs



**California Roundtable  
on Recreation, Parks and Tourism**

The California Roundtable on Recreation, Parks and Tourism (CRRPT) was founded to encourage cooperation between public and private entities involved and interested in outdoor recreation, public lands and tourism in California. Members include recreation, parks and tourism leaders from local, state and federal governmental organizations; private enterprises, user groups, environmental groups, educational institutions and the public.

Programs have included symposiums, workshops, research publications, maps and a guide to outdoor recreation opportunities in California.



## Benefits to California State Parks

California State Parks is a founding member of the CRRPT. Membership enables the department to keep abreast of innovative ideas, fosters cooperation with like-minded entities, and improves communication with the public.



## When

Year-round

## Contact Information

Nina Gordon, CRRPT Co-chair  
California State Parks  
PO Box 942896  
Sacramento CA 94296  
Phone: 916 653-9377  
[www.calroundtable.org](http://www.calroundtable.org)



# California State Park Rangers Association

## Projects and Programs

The California State Park Rangers Association (CSPRA) is a professional non-profit organization open to all state park employees, and includes rangers, trades and maintenance workers, resource ecologists, guides, district interpretive specialists, and office technicians among its members. Employees from all disciplines support CSPRA's advocacy for state parks and the park professionals who dedicate themselves to the care of state parks.

CSPRA has accomplished many tasks and achieved some important goals. CSPRA has been in the forefront of many environmental battles. Some of the many accomplishments include arguing for Pescadero Marsh reclassification from park to reserve status; successfully urging that the Off-Highway Vehicle units be included as part of the current state park system, rather than creating a separate OHV department; and supporting successful initiatives such as the California bottle bill and a ban against off-shore oil drilling. Since 1974, CSPRA has strongly lobbied in support of all Park Bond Acts and initiatives.

Together with the Park Rangers Association of California, CSPRA sponsors an Annual California Parks Conference, attracting park professionals from many agencies throughout the state. CSPRA publishes a bi-monthly newsletter as well as a web page, to keep members up-to-date on current issues and trends.

CSPRA also offers its members financial assistance through scholarships under the direction of the CSPRA Education and Training Committee. Up to \$200 per year is available to members for assistance in park related education. Details and application procedures can be found at [www.cspra.com](http://www.cspra.com).

## Benefits to California State Parks

CSPRA is concerned about the resources of the State Park System as well as the individual park professionals who serve them. Since 1967 CSPRA has been providing scholarships to its members to attend training and conferences, and has provided relief for its members in times of disaster or personal tragedy. Keeping the spirit of the park family alive is one of CSPRA's most important objectives

**When** Year-round

## Contact Information

Laura Svendsgaard, Executive Manager  
California State Park Rangers Association  
P.O. Box 1117, Yachats OR 97498  
Phone: 877 776-3618 or 541 547-3640  
Email: [laura@cspra.com](mailto:laura@cspra.com)  
[www.cspra.com](http://www.cspra.com)





# Appendix: California State Parks Cooperating Associations

Cooperating Organization	State Park Unit(s) Served
Anderson Marsh Interpretive Association	Anderson Marsh SHP
Angel Island Association	Angel Island SP
Angel Island Immigration Station Foundation	Angel Island SP (Immigration Station)
Anza-Borrego Foundation	Anza-Borrego Desert SP
Benicia State Parks Association	Benicia Capitol SHP
	Benicia SRA
Bidwell Bar Association	Lake Oroville SRA
Bidwell Mansion Cooperating Association	Bidwell Mansion SHP
Big Sur Natural History Association	Pfeiffer Big Sur SP
	Andrew Molera SP
	Julia Pfeiffer Burns SP
	John Little SP
Boosters of Old Town San Diego SHP	Old Town San Diego SHP
Calaveras Big Trees Association	Calaveras Big Trees SP
California State Capitol Museum Volunteer Association	California State Capitol Museum
California State Mining and Mineral Museum Association	California State Mining and Mineral Museum
California State Railroad Museum Foundation, Inc.	Old Sacramento SHP
	California State Railroad Museum
	Railtown 1897 SHP
Castle Crags Interpretive Association	Castle Crags SP
Central Coast Lighthouse Keepers	Point Sur SHP
Central Coast Natural History Association	Montaña de Oro SP
	Morro Bay SP
	Los Osos Oaks SR
	Morro Strand SB
	Pismo SB
Chaw'se Indian Grinding Rock Association	Indian Grinding Rock
Chino Hills Interpretive Association	Chino Hills SP
Clear Lake State Park Interpretive Association	Clear Lake SP
Columbia Historical Preservation Society	Columbia SHP
Crystal Cove Alliance	Crystal Cove SP

## California State Parks Cooperating Associations (continued)

Cooperating Association	State Park Unit(s) Served
Cuyamaca Rancho Interpretive Association	Cuyamaca Rancho SP Palomar Mountain SP
Delta Natural History Association	Brannan Island SRA Delta Meadows Frank's Tract SRA
Doheny State Beach Interpretive Association	Doheny SB
Empire Mine Park Association	Empire Mine SHP
Fort Ross Interpretive Association	Fort Ross SHP
Fort Tejon History Association	Fort Tejon SHP
Four Rivers Natural History Association	Great Valley Grasslands SP McConnell SRA Turlock Lake SRA Caswell Memorial SP George J. Hatfield SRA Pacheco SP San Luis Reservoir SRA Colonel Allensworth SHP
Friends of Allensworth	Carpinteria SB
Friends of Channel Coast State Parks	Chumash Painted Cave SHP El Capitan SB Emma Wood SB Gaviota SP McGrath SB San Buenaventura SB Refugio SB
Friends of Hearst Castle	Hearst-San Simeon SHM
Friends of Santa Cruz State Parks	The Forest of Nisene Marks Castro Adobe (Rancho San Andreas) Manresa SB New Brighton SB Palm SB Santa Cruz Mission SHP Seacliff SB Sunset SB Wilder Ranch SP
Friends of the Antelope Valley Indian Museum	Antelope Valley Indian Museum
Friends of Pío Pico, Inc.	Pío Pico SHP
Gold Discovery Park Association	Marshall Gold Discovery SHP
Hollister Hills Off-Rd Association	Hollister Hills SVRA



## California State Parks Cooperating Associations (continued)

Cooperating Association	State Park Unit(s) Served
Humboldt Redwoods State Park Interpretive Association	Fort Humboldt SHP Humboldt Redwoods SP Grizzly Creek Redwoods SP
Ide Adobe Interpretive Association	William B. Ide Adobe SHP
Lake Perris Interpretive Association	Lake Perris SRA
Los Encinos Docent Association	Los Encinos SHP
Malakoff Diggins Park Association	Malakoff Diggins SHP
Malibu Creek Docent Association	Malibu Creek SP
Malibu Lagoon State Beach Interpretive Association	Malibu Lagoon SB
Marin State Park Association	China Camp SP Samuel P. Taylor SP Olompali SHP Tomales Bay SP
McArthur-Burney Falls Interpretive Association	McArthur-Burney Falls Memorial SP
Mendocino Area Parks Association	Hendy Woods SP Caspar Headlands SB and SR Greenwood SB Jughandle SR MacKerricher SP Manchester SP Mendocino Headlands SP Maillard Redwoods SR Montgomery Woods SR Navarro River Redwoods SP Russian Gulch SP Schooner Gulch SB Van Damme SP West Port-Union Landing SB
Mojave River Natural History Association	Silverwood Lake SRA Providence Mountains SRA
Monterey Dunes Natural History Association	Marina SB Fort Ord Dunes SP Monterey SB Moss Landing SB Salinas River SB Zmudowski SB

## California State Parks Cooperating Associations (continued)

Cooperating Association	State Park Unit(s) Served
Mountain Parks Foundation	Henry Cowell Redwoods SP Big Basin Redwoods SB
Mount Diablo Interpretive Association	Mount Diablo SP
Mount San Jacinto Natural History Association	Mount San Jacinto SP
Mount Tamalpais Interpretive Association	Mount Tamalpais SP
Napa Valley Natural History Association	Bothe-Napa Valley SP Bale Grist Mill SHP Robert Louis Stevenson SP Del Norte Redwoods SP
North Coast Redwoods Interpretive Association	Jedediah Smith Redwoods SP Tolowa Dunes SP Prairie Creek Redwoods SP Harry A. Merlo SRA Humboldt Lagoons SP Patrick's Point SP
Old Monterey Preservation Society	Monterey SHP
Pine Ridge Association	Henry W. Coe SP
Poppy Reserve Mojave Desert Interpretive Association	Antelope Valley California Poppy Reserve  Arthur B. Ripley Desert Woodland Saddleback Butte SP Tomo-Kahni SHP
Plaza History Association	San Juan Bautista SHP
Plumas Eureka State Park Association	Plumas-Eureka SHP
Point Lobos Natural History Association	Carmel River SB Point Lobos SR Point Lobos Ranch
Portola-Castle Rock Foundation	Portola Redwoods SP Castle Rock SP
Prelado de los Tesoros	La Purísima Mission SHP
Red Rock Canyon Interpretive Association	Red Rock Canyon SP
Richardson Grove Interpretive Association	Admiral William Standley SRA Benbow Lake SRA Reynolds WC Richardson Grove SP Sinkyone Wilderness SP Smithe Redwoods SR Standish-Hickey SRA

## California State Parks Cooperating Associations (continued)

Cooperating Association	State Park Unit(s) Served
Sacramento Historic Sites Association	Sutter's Fort SHP
	California State Indian Museum
San Mateo Coast Natural History Association	Governor's Mansion SHP
	Año Nuevo SP and SR
	Pescadero Marsh NP
	Pigeon Point Light Station SHP
	Point Montara Lightstation
	Bean Hollow SB
	Burleigh H. Murray Ranch
	Butano SP
	Candlestick Point SRA
	Gray Whale Cove SB
	Half Moon Bay SB
	Montara SB
	Pacifica SB
	Pomponio SB
	Pescadero SB
	San Gregorio SB
	Thornton SB
San Pasqual Battlefield Volunteer Association	San Pasqual Battlefield SHP
Santa Monica Mountains Natural History Association	Point Dume SB
	Point Mugu SB
	Leo Carrillo SP
Sea and Desert Interpretive Association	Robert H. Meyer Memorial SB
	Picacho SRA
Sierra State Parks Foundation	Salton Sea SRA
	Bodie SHP
	D. L. Bliss SP
	Donner Memorial SP
	Emerald Bay SP
	Grover Hot Springs SP
	Mono Lake Tufa SR
	Sugar Pine Point SP
	Tahoe SRA
	Sonoma State Historic Park Association
South Yuba River Park Association	Petaluma Adobe SHP
	South Yuba River SP

## *California State Parks Cooperating Associations (continued)*

<b>Cooperating Association</b>	<b>State Park Unit(s) Served</b>
Southwest Wetlands Interpretive Association	Border Field SP, Tijuana River National Estuary
Stewards of the Coast and Redwoods	Salt Point SP Armstrong Redwoods SR Kruse Rhododendron SR Austin Creek SRA Sonoma Coast SB
Torrey Pines Docent Society and Torrey Pines Association	Torrey Pines SR and SB
Town of Shasta Interpretive Association	Shasta SHP
Valley of the Moon Natural History Association	Jack London SHP  Sugarloaf Ridge SP Annadel SP
Waddell Creek Association	Big Basin Redwoods SP (Rancho del Oso Nature and History Center)
Weaverville Joss House Association	Weaverville Joss House SHP

For information about this publication, contact:

California State Parks  
Planning Division  
PO Box 942896, Sacramento CA 94296-0001  
(916) 653-9901  
[planning@parks.ca.gov](mailto:planning@parks.ca.gov)  
[www.parks.ca.gov](http://www.parks.ca.gov)



© California State Parks, 2007